

Life Is On

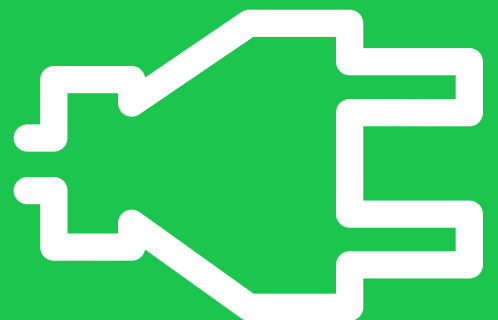
Schneider
Electric



 Price List

Final Distribution, Wiring Devices and Lighting Control Products

With effect from December 29, 2016



schneider-electric.co.in

Acti 9 Distribution System	
> ComReady Control and Command Products	6
> Miniature Circuit Breakers (MCBs)	10
> Residual Current Devices (RCDs)	13
> Auxiliaries and Accessories for MCBs/RCDs	16
> Surge Protection Devices (SPDs)	17
> Control and Command Products	20
> Modular Distribution Boards - Metallic	22
Enclosures and Plugs & Sockets	
> NeoBreak Distribution Boards	29
> Kaedra Enclosures - Weather Proof	31
> PratiKa Plugs & Sockets - IP44 / IP67	33
> Electra Metal Clad Plugs & Sockets	37
> 56 Series Plugs & Sockets - IP56 / IP66	38
Wiring Devices	
> LIVIA	42
> Opale	43
> ZENcelo India	45
> ZENcelo BS	47
> NEO	49
> ULTI Impress	51
> Kavacha	53
> Metal Boxes	54
Control Systems	
> EzInstall 3 - ULTI ZIGBEE	55
> WISER Home Control	56
> Sympholux - KNX,C-Bus, DALI	57
> Hotel Series	58
> Argus	60
> Ceiling and Wall Mount Sensors	61
> Control and Command Products	62
> Analog Timers	63
> Xighto Pro - Video Door Entry System	64
Structured Cabling Solutions	
> Datacomms	65

Acti 9 | Advanced Communication Technology that Inspires.....

>Innovative

- Centralized control system including energy metering
- Large and variable data reading and computing through universal Modbus protocol

>Efficient

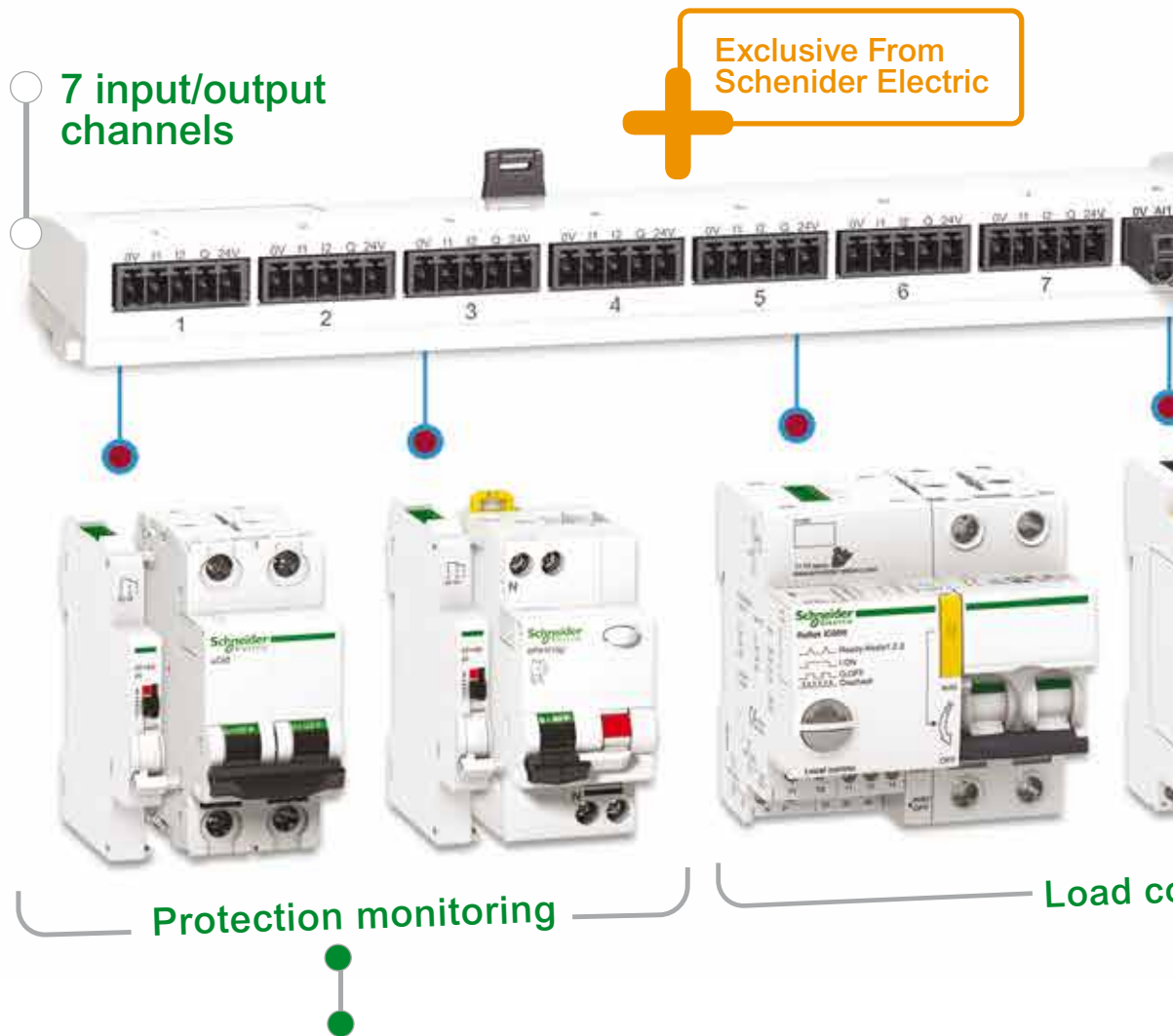
- One-click, prefabricated wiring for comprehensive communication between your distribution board or panel and any facility management system

>Reliable

- Error proof connection leading to reduction in downtime
- EMC tested for immunity, radiated and conducted safety

NEW

Email Notification upon Event (Device Status Change, Alarm threshold reached etc.)



- > Status Monitoring - ON / OFF / TRIP
- > Trip Alarm Indication
- > Load Monitoring - No. of tripping cycles, Running Hours

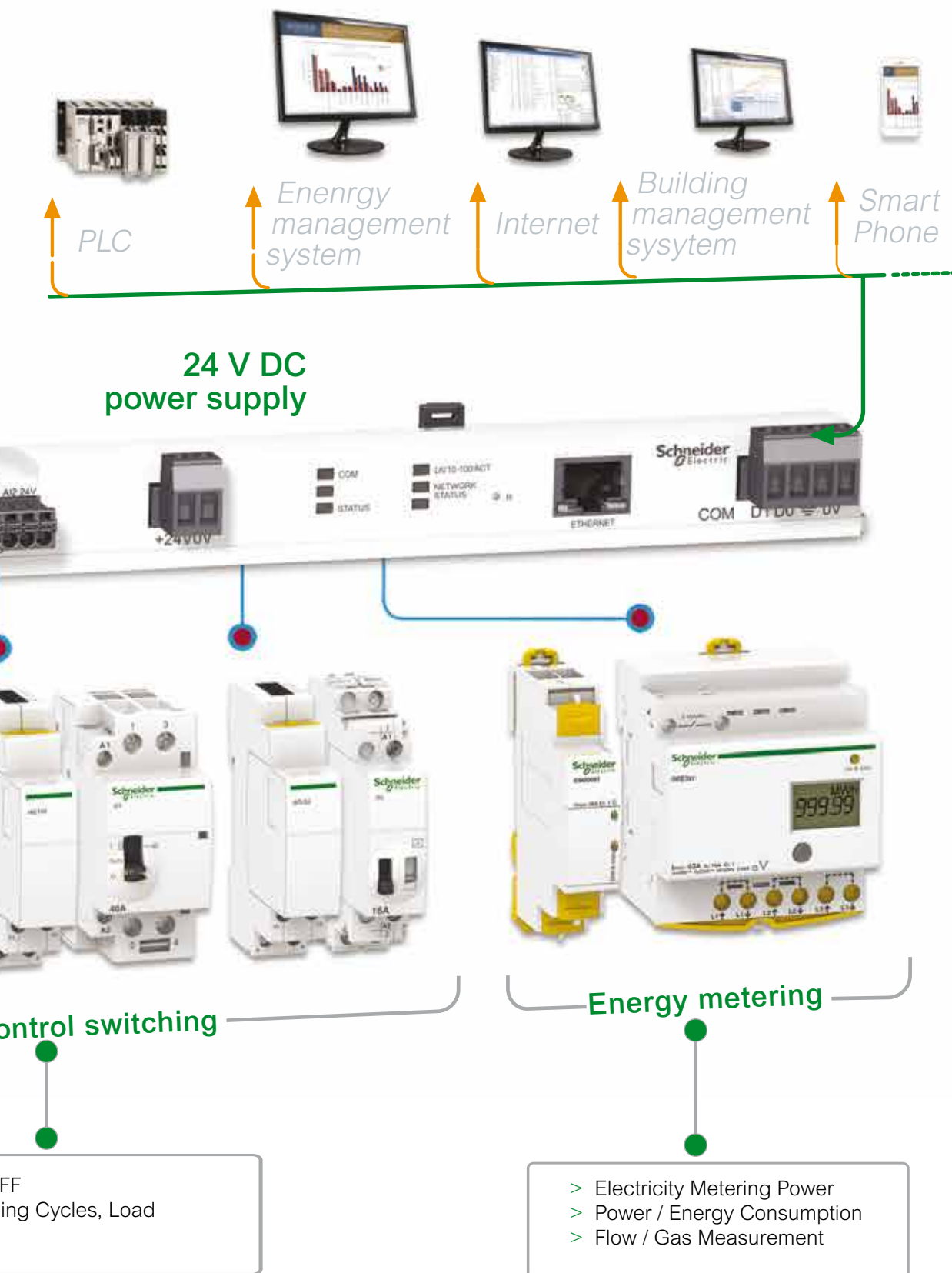
- > Switching Action - ON / OFF
- > Monitoring - No. of Switching running hours



Meets the challenge of all your applications

Detailed load control, reduced downtime and accurately planned maintenance

Ready to connect to any facility management solution



Green Premium Products

100% Recyclable and Recoverable
REACH, ROHS, PEP, EOLI compliant

Smartlink



- Compliance to IEC/EN 61131-2
- Protection Monitoring – Device Status and alarm notifications
- Load Control / Switching through Contactors and Impulse Relays
- Energy Monitoring through pulse meters
- Alarm over email and analog sensors (temperature / humidity) with Smartlink Ethernet
- Plug & Play – Pre fabricated cables and in built web pages
- Rated Voltage: 24V DC

Description	Reference	Unit LP [₹]
Smartlink Modbus	A9XMSB11	31290
Smartlink IP	A9XMEA08	34860

Communication Auxiliaries



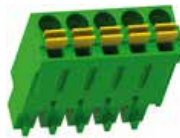
Auxiliary for Protection Devices (OF+SD24)

Auxiliary for Contactors (iACT24)

Auxiliary for Impulse Relays (iATL24)

Description	Module Width	Reference	Unit LP [₹]
OF+SD24	0.5	A9N26899	2065
iACT24	1	A9C15924	10395
iATL24	1	A9C15424	10945

Accessories



Description	Set of	Reference	Unit LP [₹]
Prefabricated Cables:			
With 2 Connectors			
Short: 100mm	6	A9XCAS06	4190
Medium: 160mm	6	A9XCAM06	4230
Long: 870mm	6	A9XCAL06	4810
With 1 Connector			
Long:870mm	6	A9XCAU06	2890
Connectors			
5-pin connectors (Ti24)	12	A9XC2412	6050
Mounting Kit			
Din Rail (4 feet, 4 Straps, 4 Adapters)	1	A9XMFA04	1180
Multiclip			
Multiclip 80A	1	04000	7345
Spare Parts			
Lock for Multiclip 80A (2 clips)	1	A9XMLA02	360
Distribloc 63A			
Distribution from the top (4 Module)	1	04040	8365
Distribution through the bottom (4 Module)	1	04041	8385
Power Logic EGX300 - Ethernet port (4 Module)	1	30002885	31290
ABL Power Supply - 1.2A 24VDC	1	ABL8MEM24012	6200
ABL Power Supply - 0.6A 24VDC	1	ABL8MEM24006	4550
Double DIN rail	1	LSL58801A	390

LP: List Price

Please contact Customer Care Center for Stockable and Non stockable status of references.

NORMAL STOCK ITEMS

W.E.F. December 29, 2016

Reflex iC60 - Integrated Control & Overcurrent Protection Device



- All in One Solution: MCB + Contactor + Impulse Relay + Auxiliary
- 10kA Breaking capacity as per IEC/EN 60947-2,
- Ti24 interface: Connection to PLC, Smartlink
- 3 operating modes to cater to a variety of applications
- Safe lock down with Integrated Padlocking
- Simplified maintenance: Front face Indicator allows better reliability

[In] Rated Current (A)	2 Pole Reference	Unit LP [₹]	3 Pole Reference	Unit LP [₹]	4 Pole Reference	Unit LP [₹]
Module Width **	4.5 mod		5.5 mod		6.5 mod	
B Curve						
10	A9C61210	30565	A9C61310	32895	A9C61410	34225
16	A9C61216	30585	A9C61316	32925	A9C61416	34265
25	A9C61225	30620	A9C61325	32990	A9C61425	34335
40	A9C61240	32540	A9C61340	35850	A9C61440	38165
63	A9C61263	33670	A9C61363	36550	A9C61463	38405
C Curve						
10	A9C62210	30570	A9C62310	32900	A9C62410	34240
16	A9C62216	30585	A9C62316	32925	A9C62416	34265
25	A9C62225	30620	A9C62325	32980	A9C62425	34340
40	A9C62240	32550	A9C62340	35870	A9C62440	38185
63	A9C62263	33665	A9C62363	36550	A9C62463	38410
D Curve						
10	A9C63210	30570	A9C63310	32900	A9C63410	34240
16	A9C63216	30585	A9C63316	32920	A9C63416	34265
25	A9C63225	30620	A9C63325	32990	A9C63425	34340

Note: **18mm/module

Energy Meters



- Digital Kilowatt-hour meters designed for sub-metering of active energy (rms) consumed by a single-phase or three-phase electric circuit with or without distributed neutral
- ComReady DB mountable version
- Accuracy class-1
- No External CT required

Description	Reference	Unit MRP [₹]
iEM 2000T 1Ph Energy Meter upto 40A, POP w/o Display	A9MEM2000T	4595
iEM3110 3 Phase Energy Meter Energy Meter with POP Accuracy CL 1.0	A9MEM3110	11292
iEM3150 3 Phase Energy Meter Energy Meter with V,I,Power, Accuracy CL 1.0, with Modbus	A9MEM3150	12335
iEM3155 Multifunction 3 Phase Energy Meter with V,I,F,PF,Power, Energy,1DI/1DO, Multi Tariff, with Modbus Accuracy CL 1.0	A9MEM3155	13069

Note : For Higher Currents /Loads , Select iEM32 Series , CT Operated , Accuracy CL 0.5S

Acti 9 | Advanced Communication Technology that Inspires

> Protection devices

- Miniature circuit breakers
- Residual current circuit breakers
- Vigi™ residual current devices
- Surge Protection Devices

> Protection monitoring and supervision

- Indication and tripping auxiliaries
- Remote control auxiliaries
- Automatic recloser auxiliaries



Innovative
Protection monitoring Total control and
Metering @ DB level



Efficient
Manage loads, reduce operating and project
costs, and accurately plan maintenance

> Control and monitoring

- Contactors
- Impulse relays
- Integrated control circuit breakers
- Light indicators
- Push-buttons and selector switches
- Kilowatt hour meters
- Communicating architecture

> Installation system

- IP20B terminals
- Splitter blocks
- Full range of mounting and wiring accessories



Reliable

Dual certifications for one product, 100 percent MCB and RCD coordination, easy ordering and design, error free fast connections

AC Miniature Circuit Breakers - xC60



- Breaking Capacity as per IEC 60898 and IS/IEC 60898, Icn = 10kA
- Breaking Capacity as per IEC 60947-2, Icn = 15kA, upto 40A
- Can be used for DC application upto 60V per pole
- Higher system performance with optimized cost: Cascading*
- Increased System Continuity: Discrimination*
- Higher Installation Life: Energy Limitation Class 3, Fast Closure Mechanism
- Ease, Speed and Flexibility of installation - Biconnect, Line-Load Reversible
- Field-fittable auxiliaries for advance protection and monitoring
- Positive Contact Indication for assurance of disconnection
- Reference Temperature of 50°C as per IEC 60947-2

[In] Rated Current (A)	1 Pole Reference	Unit MRP [₹]	2 Pole Reference	Unit MRP [₹]	3 Pole Reference	Unit MRP [₹]	4 Pole Reference	Unit MRP [₹]
Module Width**	1 mod		2 mod		3 mod		4 mod	
MOQ	12 Nos.		6 Nos.		4 Nos.		3 Nos.	

B curve

6	A9N1P06B	268	A9N2P06B	788	A9N3P06B	1286	A9N4P06B	1728
10	A9N1P10B	268	A9N2P10B	788	A9N3P10B	1286	A9N4P10B	1728
16	A9N1P16B	268	A9N2P16B	788	A9N3P16B	1286	A9N4P16B	1728
20	A9N1P20B	268	A9N2P20B	788	A9N3P20B	1286	A9N4P20B	1728
25	A9N1P25B	268	A9N2P25B	788	A9N3P25B	1286	A9N4P25B	1728
32	A9N1P32B	268	A9N2P32B	788	A9N3P32B	1286	A9N4P32B	1728
40	A9N1P40B	578	A9N2P40B	1278	A9N3P40B	1972	A9N4P40B	2508
50	A9N1P50B	578	A9N2P50B	1278	A9N3P50B	1972	A9N4P50B	2508
63	A9N1P63B	578	A9N2P63B	1278	A9N3P63B	1972	A9N4P63B	2508

C curve

1	A9N1P01C	406	A9N2P01C	1098	A9N3P01C	1692	A9N4P01C	2148
2	A9N1P02C	406	A9N2P02C	1098	A9N3P02C	1692	A9N4P02C	2148
3	A9N1P03C	406	A9N2P03C	1098	A9N3P03C	1692	A9N4P03C	2148
4	A9N1P04C	406	A9N2P04C	1098	A9N3P04C	1692	A9N4P04C	2148
6	A9N1P06C	268	A9N2P06C	788	A9N3P06C	1286	A9N4P06C	1728
10	A9N1P10C	268	A9N2P10C	788	A9N3P10C	1286	A9N4P10C	1728
16	A9N1P16C	268	A9N2P16C	788	A9N3P16C	1286	A9N4P16C	1728
20	A9N1P20C	268	A9N2P20C	788	A9N3P20C	1286	A9N4P20C	1728
25	A9N1P25C	268	A9N2P25C	788	A9N3P25C	1286	A9N4P25C	1728
32	A9N1P32C	268	A9N2P32C	788	A9N3P32C	1286	A9N4P32C	1728
40	A9N1P40C	578	A9N2P40C	1278	A9N3P40C	1972	A9N4P40C	2508
50	A9N1P50C	578	A9N2P50C	1278	A9N3P50C	1972	A9N4P50C	2508
63	A9N1P63C	578	A9N2P63C	1278	A9N3P63C	1972	A9N4P63C	2508

D curve

1	A9N1P01D	412	A9N2P01D	1118	A9N3P01D	1736	----	----
2	A9N1P02D	412	A9N2P02D	1118	A9N3P02D	1736	A9N4P02D	2174
3	A9N1P03D	412	A9N2P03D	1118	A9N3P03D	1736	A9N4P03D	2174
4	A9N1P04D	412	A9N2P04D	1118	A9N3P04D	1736	A9N4P04D	2174
6	A9N1P06D	346	A9N2P06D	830	A9N3P06D	1354	A9N4P06D	1798
10	A9N1P10D	346	A9N2P10D	830	A9N3P10D	1354	A9N4P10D	1798
16	A9N1P16D	346	A9N2P16D	830	A9N3P16D	1354	A9N4P16D	1798
20	A9N1P20D	346	A9N2P20D	830	A9N3P20D	1354	A9N4P20D	1798
25	A9N1P25D	346	A9N2P25D	830	A9N3P25D	1354	A9N4P25D	1798
32	A9N1P32D	346	A9N2P32D	830	A9N3P32D	1354	A9N4P32D	1798
40	A9N1P40D	628	A9N2P40D	1362	A9N3P40D	2096	A9N4P40D	2640
50	A9N1P50D	628	A9N2P50D	1362	A9N3P50D	2096	A9N4P50D	2640
63	A9N1P63D	628	A9N2P63D	1362	A9N3P63D	2096	A9N4P63D	2640

Note: * Please contact nearest Schneider Electric Sales Office or Customer Care Center for coordination chart
**18mm/module

AC Miniature Circuit Breakers - C120



- Breaking capacity as per IEC 60898, Icn = 10kA/15kA
- Positive Contact Indication for assurance of disconnection
- Degree of pollution: 3 (suitable for industrial environment)
- Operating Temperature: -30 to 70°C
- Terminal connections: Flexible cables up to 35 sq.mm; Rigid cables up to 50 sq.mm
- Reference temperature 50°C as per IEC 60947-2

[In] Rated Current (A)	1 Pole Reference	Unit MRP [₹]	2 Pole Reference	Unit MRP [₹]	3 Pole Reference	Unit MRP [₹]	4 Pole Reference	Unit MRP [₹]
Module Width**	1.5 mod		3 mod		4.5 mod		6 mod	
MOQ	12 Nos.		6 Nos.		4 Nos.		3 Nos.	

C120N (10kA)

80	A9N18357	2115	A9N18361	4695	A9N18365	7400	A9N18372	9640
100	A9N18358	2375	A9N18362	5010	A9N18367	7885	A9N18374	10055
125	A9N18359	2565	A9N18363	5510	A9N18369	8755	A9N18376	11370

C120H (15kA)

80	A9N18446	2535	A9N18457	5710	A9N18468	8695	A9N18479	11165
100	A9N18447	2800	A9N18458	5850	A9N18469	9475	A9N18480	12035
125	A9N18448	3055	A9N18459	6640	A9N18470	10220	A9N18481	13075

DC Miniature Circuit Breakers - C60H



- Specially designed MCB for enhanced protection in DC installation
- Magnetic arch chutes to quick break DC current in event of fault
- Breaking capacity 6kA as per IEC 60947-2
- Voltage Rating: 1P - 250 V DC & 2P - 500 V DC
- Impulse Voltage: 6 kV
- Higher Installation Life: Energy Limiting Class: 3

[In] Rated Current (A)	Module Width 18mm/module	1 Pole Reference	Unit LP [₹]	Module Width 18mm/module	2 Pole Reference	Unit LP [₹]
MOQ		12 Nos.			6 Nos.	

C60H-DC

0.5	1	A9N61500	725	2	A9N61520	1530
1	1	A9N61501 <input checked="" type="checkbox"/>	725	2	A9N61521 <input checked="" type="checkbox"/>	1530
2	1	A9N61502 <input checked="" type="checkbox"/>	725	2	A9N61522 <input checked="" type="checkbox"/>	1530
3	1	A9N61503 <input checked="" type="checkbox"/>	725	2	A9N61523 <input checked="" type="checkbox"/>	1530
4	1	A9N61504 <input checked="" type="checkbox"/>	725	2	A9N61524 <input checked="" type="checkbox"/>	1530
5	1	A9N61505	725	2	A9N61525	1530
6	1	A9N61506 <input checked="" type="checkbox"/>	590	2	A9N61526 <input checked="" type="checkbox"/>	1285
10	1	A9N61508 <input checked="" type="checkbox"/>	590	2	A9N61528 <input checked="" type="checkbox"/>	1285
16	1	A9N61511 <input checked="" type="checkbox"/>	590	2	A9N61531 <input checked="" type="checkbox"/>	1285
20	1	A9N61512 <input checked="" type="checkbox"/>	590	2	A9N61532 <input checked="" type="checkbox"/>	1285
25	1	A9N61513 <input checked="" type="checkbox"/>	590	2	A9N61533 <input checked="" type="checkbox"/>	1285
32	1	A9N61515 <input checked="" type="checkbox"/>	590	2	A9N61535 <input checked="" type="checkbox"/>	1285
40	1	A9N61517 <input checked="" type="checkbox"/>	775	2	A9N61537 <input checked="" type="checkbox"/>	1770
50	1	A9N61518 <input checked="" type="checkbox"/>	775	2	A9N61538 <input checked="" type="checkbox"/>	1770
63	1	A9N61519 <input checked="" type="checkbox"/>	775	2	A9N61539 <input checked="" type="checkbox"/>	1770

Special application MCBs



Solar Application – PV DC

- DC MCB for multi string PV installations
- Operating Voltage: 800V DC
- Current Rating up to 25A
- Complies to IEC / EN 60947-2



Rail Application* (including Rolling Stock)

- Fire & smoke Resistant – Level 2 (NF F 16-101, NF F 16-102)
- Shock & vibration resistant (IEC 61373) – Cat 1, Class B
- Breaking Capacity: up to 25kA
- Complies to IEC / EN 60947-2



UL MCB

- Type: UL1077, UL489
- Breaking Capacity of 10kA
- Complies to IEC 60947-2 / UL1077 / UL489 / CSA

Note:

Please contact nearest Schneider Electric sales office or Customer Care for Reference and prices of Application Specific MCBs

*Rail Application RCDs are also available on demand

**18mm/module

Please contact Customer Care Center for Stockable and Non stockable status of references.

NORMAL STOCK ITEMS

W.E.F. December 29, 2016

AC Miniature Circuit Breakers - NG125



- Compliance to IEC / EN 60947-2
- High Breaking Capacity MCBs – up to 50kA
- Current Rating up to 125A
- Trip on fault indication on front face of MCB
- Suitability for isolation in the industrial sector to IEC/EN 60947-2
- Available in B, C, D Curves

[In] Rated Current (A)	1 Pole Reference	Unit LP [₹]	2 Pole Reference	Unit LP [₹]	3 Pole Reference	Unit LP [₹]	4 Pole Reference	Unit LP [₹]
Module Width**	1.5 mod		3 mod		4.5 mod		6 mod	
NG125N – 25kA Breaking Capacity								
10	18610	*	18621	*	18632	*	18649	*
16	18611	*	18622	*	18633	*	18650	*
20	18612	*	18623	*	18634	*	18651	*
25	18613	*	18624	*	18635	*	18652	*
32	18614	*	18625	*	18636	*	18653	*
40	18615	*	18626	*	18637	*	18654	*
50	18616	*	18627	*	18638	*	18655	*
63	18617	*	18628	*	18639	*	18656	*
80	18618	*	18629	*	18640	*	18658	*
NG125H – 36kA Breaking Capacity								
10	18705	*	18714	*	18723	*	18732	*
16	18706	*	18715	*	18724	*	18733	*
20	18707	*	18716	*	18725	*	18734	*
25	18708	*	18717	*	18726	*	18735	*
32	18709	*	18718	*	18727	*	18736	*
40	18710	*	18719	*	18728	*	18737	*
50	18711	*	18720	*	18729	*	18738	*
63	18712	*	18721	*	18730	*	18739	*
80	18713	*	18722	*	18731	*	18740	*
NG125H – 50kA Breaking Capacity								
10	18777	*	18788	*	18799	*	18810	*
16	18778	*	18789	*	18800	*	18811	*
20	18779	*	18790	*	18801	*	18812	*
25	18780	*	18791	*	18802	*	18813	*
32	18781	*	18792	*	18803	*	18814	*
40	18782	*	18793	*	18804	*	18815	*
50	18783	*	18794	*	18805	*	18816	*
63	18784	*	18795	*	18806	*	18817	*
80	18785	*	18796	*	18807	*	18818	*

*Price on Request – Please contact Schneider Electric Customer Care Center for Prices

**18mm/module

Note: Reference provided above are for C Curve MCBs – B and D Curve details available on request

Residual Current Devices (RCDs) - For Human and Fire Protection



**30
mA**

Use of **30mA RCDs** is now **mandatory** for all **domestic intallations** in India {CEA Amendment regulation 2015*}



Schenider Electric provides voltages independent RCDs which work on current sensing technology and provide protection from residual current even at extra low voltages (down to zero volts) and in case of break of neutral.

**SI
Type**

Schenider Electric offers SI RCD built to operate in electroically polluted or intallation in aggressive environments:

- Flourescent / Variable lighting with Electronic ballast
- Powerful IT / Telecom equipment / Air conditioning
- Severe Atmosphere - High lighting risk / Swimming pools

* for Measures relating to Safety and Electric supply

AC Residual Current Circuit Breakers - xID



- Complies to standards IEC/EN 61008-1 and IS 12640
- AC Class protection
- Selective range available for time based discrimination
- Easy Monitoring: Earth fault indication and Test Button on front face
- Operating temperature up to +70°C
- Mandatory to use OF-S auxiliary to add any indication or tripping auxiliary

[In] Rated Current (A)	Earth-Leakage Sensitivity (mA)	Module Width 18mm/module	2 Pole Reference	Unit MRP [₹]	Module Width 18mm/module	4 Pole Reference	Unit MRP [₹]
25	30	2	A9N16201	2815	4	A9N16251	3830
	100	2	A9N16203	3000	4	A9N16253	3990
	300	2	A9N16202	3085	4	A9N16252	4110
40	30	2	A9N16204	3300	4	A9N16254	3840
	100	2	A9N16205	3495	4	A9N16255	4015
	300	2	A9N16206	3590	4	A9N16256	4170
63	30	2	A9N16208	3900	4	A9N16258	4450
	100	2	A9N16209	4120	4	A9N16259	4745
	300	2	A9N16210	4205	4	A9N16260	4765
80	30	2	A9N16212	6565	4	A9N16261	7700
	100	2	A9N16213	6550	4	A9N16262	7680
	300	2	A9N16214	6670	4	A9N16263	7725

AC Residual Current Circuit Breakers (RCCBs) - ID



- Complies to standards IEC 61008-1 and VDE 0664
- AC Class protection
- Degree of pollution: 3 (suitable for industrial environment)
- Electrical ON/OFF indication by using OFSP auxiliary

Poles Description	[In] Rated Current (A)	Earth-Leakage Sensitivity (mA)	Module Width 18mm/module	Reference	Unit LP [₹]
4P	100	30	4	**A9R11491	9290
		100	4	**A9R12491	9595
	125	30	4	16905	27615
		100	4	16906	28055
		300	4	16907	28575

Note: **For 100A RCCB Auxiliary kindly contact Customer Care

AC Residual Current Breaker Overload (RCBO) - DPN N Vigi



- Complies to standards IEC/EN 61009
- AC Class Protection; Tripping characteristics - C curve
- Overvoltage category (IEC 60364): IV
- Suitable for indication & tripping auxiliaries

Poles Description	[In] Rated Current (A)	Earth-Leakage Sensitivity (mA)	Module Width 18mm/module	Reference	Unit LP [₹]
1P+N	6	30	2	A9N19661	4160
		300	2	A9N19681	4330
	10	30	2	A9N19663	4160
		300	2	A9N19683	4330
	16	30	2	A9N19665	4160
		300	2	A9N19685	4330
	20	30	2	A9N19666	4160
		300	2	A9N19686	4330
	25	30	2	A9N19667	4160
		300	2	A9N19687	4330
	32	30	2	A9N19668	4375
		300	2	A9N19688	4500
	40	30	2	A9N19669	5350
		300	2	A9N19689	5480

Note: Application specific RCDs also available with 10mA, 500mA and 1000mA sensitivities | Please contact nearest Schneider Electric Sales Office or Customer Care Center for Reference and Prices

Please contact Customer Care Center for Stockable and Non stockable status of references.

NORMAL STOCK ITEMS

W.E.F. December 29, 2016

SI Type Residual Current Circuit Breakers (RCCBs) - xID SI



- Complies to standard IEC/EN 61008-1
- SI RCDs offer enhanced immunity against Electrical Disturbances; Polluted and Corrosive environments - Guaranteed performance in harsh operating conditions
- Ensures continuity of supply in networks with:
 - Transient overvoltages
 - Loads generating HF leakage current i.e. harmonics
 - Loads generating continuous leakage current
- Ensures tripping on genuine earth fault in networks with:
 - Pulsating DC components
 - HF applications which "Blinds" (non-tripping) the conventional RCDs

[In] Rated Current (A)	Earth-Leakage Sensitivity (mA)	Module Width 18mm/module	2 Pole Reference	Unit LP ₹	Module Width 18mm/module	4 Pole Reference	Unit LP ₹
25	30	2	A9N16234	6080	4	A9N16321	6760
40	30	2	A9N16237	6400	4	A9N16324	6980
63	30	2	A9N16240	6560	4	A9N16327	7165
	300	2	A9N16246	6570	4	A9N16334	7480

Vigi Block for xC60 (Add-on RCD Module, 2 & 4 Pole)



- Flexibility to use MCB of any tripping curve to suit applications, ensuring best 3 in 1 protection
- No auxiliary supply required
- AC Class protection
- Degree of pollution: 3 (suitable for industrial environment)
- Immune to nuisance tripping due to transient over voltages

[In] Rated Current (A)	Earth-Leakage Sensitivity (mA)	Module Width 18mm/module	2 Pole Reference	Unit LP ₹	Module Width 18mm/module	4 Pole Reference	Unit LP ₹
25	30	1.5	A9N26581	3085	3	A9N26595	3705
	100	1.5	A9N26582	3855	3	A9N26596	4000
	300	1.5	A9N26583	3975	3	A9N26597	4120
63	30	2	A9N26611	4320	3.5	A9N26643	4540
	100	2	A9N26612	4490	3.5	A9N26644	4630
	300	2	A9N26613	4580	3.5	A9N26645	4720

Note: Vigi Block for High Rating up to 125A (C120) and High Breaking Capacity (NG125) available on demand

SI Type Residual Current Breaker Overload (RCBO) - DPN N Vigi SI



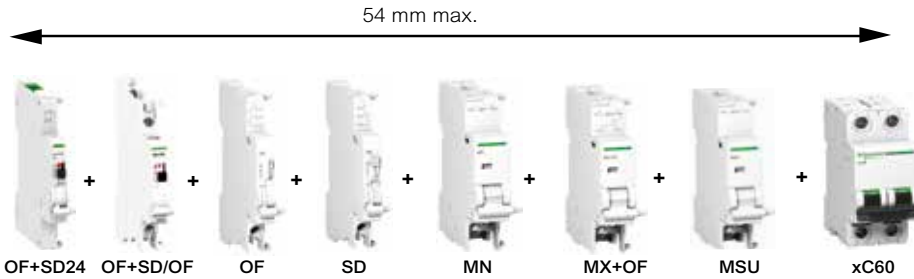
- Complies to standard IEC/EN 61009
- Ensures continuity of supply in networks with:
 - Transient overvoltages
 - Loads generating HF leakage current i.e. harmonics
 - Loads generating continuous leakage current
- Ensures tripping on genuine earth fault in networks with :
 - Pulsating DC components
 - HF applications which "Blinds" (non-tripping) the conventional RCDs

Poles Description	[In] Rated Current (A)	Earth-Leakage Sensitivity (mA)	Module Width 18mm/module	Reference	Unit LP ₹
1P+N	6	30	2	A9N19631	*
		300	2	A9N19641	*
	10	30	2	A9N19632	*
		300	2	A9N19642	*
	16	30	2	A9N19634	*
		300	2	A9N19644	*
	20	30	2	A9N19635	*
		300	2	A9N19645	*
	25	30	2	A9N19636	*
		300	2	A9N19646	*
	32	30	2	A9N19637	*
		300	2	A9N19647	*
	40	30	2	A9N19638	*
		300	2	A9N19648	*

*For Prices, please contact nearest Schneider Electric Sales Office or Customer Care Center

Common Auxiliaries for xC60 / C120 / RCDs Range

- Field-fittable auxiliaries (clip fitted) mounted on left side with maximum width of 54mm
- Order: Tripping Auxiliaries (MN first) followed by Indication Auxiliaries (SD first)



Type	Module Width 18mm/module	Reference	Unit LP [₹]
Indication Auxiliaries			
OF Auxiliary Switch: for ON/OFF indications	0.5	A9N26924	795
SD Alarm Switch: for Trip on fault indications	0.5	A9N26927	925
OF + SD/OF Auxiliary switch	0.5	A9N26929	2560
OF+SD24 auxiliary contact (ComReady)	0.5	A9N26899	2065
Protection Auxiliaries – Trip Indication on front face			
MN Under-voltage Release 220-240V AC	1	A9N26960	2190
MSU Over-voltage Release 275V AC	1	A9N26500	3765
Tripping Auxiliaries – Trip Indication on front face			
MX + OF Shunt Release 110-415V AC: for Remote tripping of Circuit Breaker	1	A9N26946	2160
MX + OF Shunt Release 12-24V AC/DC: for Remote tripping of Circuit Breaker	1	A9N26948	2160
Auxiliary Switch for RCCBs – Mandatory for use of Auxiliaries with RCCBs			
Auxiliary switch for RCCB up to 80A (OF-S)	0.5	A9N26923	960
Auxiliary switch for RCCBs 125A (OFSP)	0.5	16940	1480

Accessories



Type	Description	Reference	Unit LP [₹]
Rotary Handle*	Breaker Switching Sub-Assembly	27046	2975
	Extended, Disconnectable handle	27047	1760
Padlock** (bag of 2)		26970	715
Multicable terminal for 3 copper cables**		19096	1200
Aluminum cable terminal**		27060	315
Spacer		A9N27062	155

* for xC60, C120, DPN N Vigti, C60H-DC, xSW - Multi poles only

**for xC60, xID, DPN N Vigti, C60H-DC, xSW, C60PV-DC

Note: For all above Reference MOQ = 1

Please contact Customer Care Center for Stockable and Non stockable status of references.

NORMAL STOCK ITEMS

W.E.F. December 29, 2016

Protection Against Lightning Strikes And Switching Surges



For all low voltage switchboards and electrical enclosures:

Comprehensive range

- To ensure the protection of equipment connected to:
 - low voltage networks,
 - telecommunications networks,
 - computer networks.
- Easy to implement and use.
- Compatibility with all earthing systems (TT, TNS, TNC, IT).
- Technical and aesthetic consistency.

Continuity of service and certified safety

Schneider Electric certified coordination between the surge arrester and its disconnection circuit breaker.

Compliance with standards: IEC/EN 61643-11.



More and more electrical equipment today is sensitive to overvoltages caused by lightning.



90%

of power outlets supply equipment incorporating electronic devices.



iQuick PRD "built-in" technology surge arresters, a Schneider Electric innovation, incorporate their own disconnection circuit breaker: easy to choose and simple to install for greater effectiveness.



Up to **30%** of installation time saved.

Surge Arresters - Type 1+ 2



- Complies to IEC 61643-1 and EN 61643-11
- Withdraw able type: Easy Replacement
- Inbuilt SPD health Indicator: Also available with remote signaling
- For protection against Direct lightning surge, Indirect lightning surge, Switching surge
- Imp up to 25kA & I_{max} upto 40kA
- **Always use a Back-up MCB with your SPD**
- Maximum Operating Voltage [U_c]: 350V

Type	poles	Description	Module Width 18mm/module	Reference	Unit LP
PRD1 25r		1P	2	16329	10690
		1P + N	4	16330	23520
		3P	6	16331	35275
		3P + N	8	16332	43825

Surge Arresters iPRD- Type 2 (Withdrawable type) (TT, TN-S, TN-C Systems)



- In conformance with standards IEC 61643-11/2011 T2 and EN 61643-11 Type 2
- For protection against Indirect lightning surge and Switching surge
- Inbuilt health Indicator
- Response time < 25ns
- I_{max} (8/20 μs): 65/40/15/8kA
- Maximum Operating Voltage [U_c]: 340V
- Level of protection, U_p: 1.0 - 2.0 kV
- Remote indication contact with 8r/20r/40r/65r
- **Always use a Back-up MCB with your SPD**

Type	Rated Voltage (V)	Pole Description	Module Width 18mm/module	Reference	Unit LP
iPRD8	230	1P	1	A9L08100	3600
	230	1P+N	2	A9L08500	6730
	230/400	3P	3	A9L08300	9090
	230/400	3P+N	4	A9L08600	13730
iPRD8r	230	1P+N	2	A9L08501	8075
	230/400	3P+N	4	A9L08601	16480
iPRD20	230	1P	1	A9L20100	4035
	230	1P+N	2	A9L20500	8470
	230/400	3P	3	A9L20300	10845
	230/400	3P+N	4	A9L20600	15625
iPRD20r	230	1P+N	2	A9L20501	10070
	230/400	3P+N	4	A9L20601	18750
iPRD40	230	1P	1	A9L40100	4770
	230	1P+N	2	A9L40500	9750
	230/400	3P	3	A9L40300	14005
	230/400	3P+N	4	A9L40600	19535
iPRD40r	230	1P	1	A9L40101	5720
	230	1P+N	2	A9L40501	12580
	230/400	3P	3	A9L40301	18860
	230/400	3P+N	4	A9L40601	23440
iPRD65r	230	1P	1	A9L65101	7650
	230	1P+N	2	A9L65501	16030
	230/400	3P	3	A9L65301	20925
	230/400	3P+N	4	A9L65601	27155

Spare Cartri_DGes for iPRD



- Spare cartri_DGes for iPRD8r, iPRD20r, iPRD40r and iPRD65r
- End of life indication available on front face
- These cartri_DGes are not compatible with Old SPD range (A9L16...)**

Type	Spare cartri_DGes for	Reference	Unit LP
iPRD 65-350	iPRD65r	A9L65102	4790
iPRD 40-350	iPRD40, iPRD40r	A9L40102	3685
iPRD 20-350	iPRD20, iPRD20r	A9L20102	2945
iPRD 8-350	iPRD8, iPRD8r	A9L08102	2580
iPRD Neutral	All products (1P+N, 3P+N)	A9L00002	3875

**Spare Cartri_DGes for Old SPD Range (A9L16...) are available on demand - please contact nearest Schneider Electric Sales Office or Customer Care for Reference and prices
Note: For all above Reference MOQ = 1

Please contact Customer Care Center for Stockable and Non stockable status of references.

NORMAL STOCK ITEMS

W.E.F. December 29, 2016

iQuick PRD - Type 2 with inbuilt MCB



- Compact SPD with in-built back up MCB - saving on space, MCB selection, wiring time
- Compliance to EN 61643-11
- Withdrawable Type - Cost Efficient - Allows damaged cartri_DGes to be replaced without having to replace entire SPD
- Inbuilt SPD Health Indicator on front face of device; Remote signaling functionality also available
- Incoming Protection: iQuick PRD 40r (High Risk level) and iQuick PRD 20r (Moderate Risk level)
- Secondary Protection: iQuick PRD 8r is cascade mounted with incoming surge arresters

Type	Poles Discription	Module Width 18mm/module	Reference	Unit LP [₹]
iQuick PRD 8r	1P+N	4	A9L16298	9725
	3P	6.5	A9L16299	14295
	3P+N	7.5	A9L16300	17790
iQuick PRD 20r	1P+N	4	A9L16295	11670
	3P	6.5	A9L16296	17155
	3P+N	7.5	A9L16297	21345
Quick PRD 40r	1P+N	4	A9L16292	13625
	3P	6.5	A9L16293	20420
	3P+N	7.5	A9L16294	25385

Note: Spare / Replacement Cartri_DGes available - For Reference and prices contact nearest sales office or customer care

Photovoltaic surge arresters



- Protection for photovoltaic panels and the DC input to the inverter from overvoltages due to a lightning strike
- Type 2 surge arresters
- Should be installed in switchboard inside the building. If switchboard is located outside, it must be weatherproof
- Withdrawable surge arrester allows damaged cartri_DGes to be replaced quickly
- Inbuilt SPD Health Indicator on front face of device; Remote signaling functionality also available

Type	U (cpv) Maximum Operating Voltage (V)	Module Width 18mm/module	Reference	Unit LP [₹]
iPRD 40r	800	3	A9L40271	7805
	1000	3	A9L40281	8915

Note: Spare / Replacement Cartri_DGes available - For Reference and prices contact nearest sales office or customer care

Surge Arresters for Communication Networks



- Analogue telephone line protection: iPRC surge arrester wired in series to the private installation input, protects the telephones, the modems (including ADSL) etc
- Protection for 2 low-current lines without common potential or 4 lines with common reference potential
- iPRI protects measuring instrument and PLC sensor inputs and the DC power supply inputs up to 53 V and AC power supply inputs up to 37 V

Type	[Ue] Operational Voltage (V)	Module Width 18mm/module	Reference	Unit LP [₹]
PRI	48 V DC	1	A9L16339	13455
PRC	130 V AC	1	A9L16337	8235

Note: For all above Reference MOQ = 1

Isolator - xSW



- Complies to IEC/EN 60947-3
- Switching duty: AC-22
- Impulse voltage: 6kV
- DC application: 48V (110V with 2 poles in series)
- Short circuit withstand 20 In for 1 second
- Upto 80A Bi connect terminals & 100A to 125A with mono connect terminals

Poles Description	[In] Rated Current (A)	Module Width 18mm/module	MOQ	Reference	Unit MRP ₹
2	40	2	6	A9S2P040	490
	63	2	6	A9S2P063	650
	80	2	6	A9S2P080	770
	100	2	6	A9S2P100	1115
	125	2	6	A9S2P125	1150
3	40	3	4	A9S3P040	855
	63	3	4	A9S3P063	1000
4	40	4	3	A9S4P040	1085
	63	4	3	A9S4P063	1185
	80	4	3	A9S4P080	1665
	100	4	3	A9S4P100	1680
	125	4	3	A9S4P125	1785

Selector Switch - iSSW



- Complies to IEC 60947-5-1 and IEC 60669-1
- Rating 20A, 250V AC
- Electrical life (AC22): 30,000 cycles
- Connection: tunnel terminals cables up to 10 sq. mm

No. of positions	Poles Description	Contacts	Module Width 18mm/module	MOQ	Reference	Unit MRP ₹
2	1	1 C/O	1	12	A9E18070	945
	2	2 C/O	2	6	A9E18071	1305
		1NO + 1NC	1	12	A9E18072	760
3	1	1 C/O	1	12	A9E18073	930
	2	2 C/O	2	6	A9E18074	1575

iRO Buzzers



- Audible indication in housing and the tertiary sector
- Sound level of 70dBA at a distance of 60cm

Voltage	Module Width 18mm/module	Reference	Unit LP ₹
230V AC	1	A9A15322	370
8..12V AC	1	A9A15323	310

iCT Contactors



- Complies with standards IEC 1095, E N 61095
- 4 operating modes switch on front face :
 - Automatic mode
 - Temporary "ON" mode
 - Permanent "ON" mode
 - Shutdown
- Mechanical contact position Indicator
- Safe installation maintenance: lock the contactor in ON position
- Silent operation (20dB) for entire range

Type	Rating (A)	No. of Contacts	Module Width 18mm/module	Reference	Unit LP [₹]
1P	25	1NO	1	A9C20731	1550
	16	2NO	1	A9C22712	1595
2P	25	2NO	1	A9C20732	1905
	40	2NO	2	A9C20842	3265
	63	2NO	2	A9C20862	4170
3P	25	3NO	2	A9C20833	2420
	40	3NO	2	A9C20843	5460
	63	3NO	3	A9C20863	5940
4P	25	4NO	2	A9C20834	2570
	40	4NO	2	A9C20844	5570
	63	4NO	3	A9C20864	6720
	63	2NO + 2NC	3	A9C20868	6720

Note: 100A Contactor in 2P / 4P - available on request

iTL Impulse Relays



- Complies with standards IEC/EN 60669-2-2
- Safe maintenance: disconnection of remote control by selector switch
- Manual Controls on front face: 0-I toggle
- Mechanical contact position Indicator
- Maximum 5 operations/min. and 100 switching operations/day
- Degree of pollution: 3 (suitable for industrial environment)

Type	Rating (A)	Control Voltage	No. of Contacts	Module Width	Reference	Unit LP [₹]
1P	16	230-240 VAC	1NO	1	A9C30811	1000
	32	230-240 VAC	1NO	1	A9C30831	1255
2P	16	230-240 VAC	2NO	1	A9C30812	1645
	32	230-240 VAC	2NO	1	A9C30831 + A9C32836	3910
3P	16	230-240 VAC	1NO+1NO/NC+1NO	2	A9C30811 + A9C32816	3130
	32	230-240 VAC	1NO+1NO/NC+1NO	2	A9C30831 + 2 x A9C32836	6565
4P	16	230-240 VAC	4NO	2	A9C30814	3415
	32	230-240 VAC	4NO	2	A9C30831 + 3 x A9C32836	9220

iIL Indicator Lights



- Complies with standard IEC 60947-5-1
- Indicator light with LED technology
- Service life 100,000 hours with constant luminous efficiency

Type	Colour	Module Width 18mm/module	Reference	Unit LP [₹]
Single Indicator light	Red	1	A9E18320	1025
	Green	1	A9E18321	1025
	Blue	1	A9E18323	1025
	Orange	1	A9E18324	1025
3 phase voltage presence light	Red/Red/Red	1	A9E18327	2290
Single Push Button (1 NO+ 1NC)	Grey	1	A9E18033	1525

Note: For all above Reference MOQ = 1

Please contact Customer Care Center for Stockable and Non stockable status of references.

NORMAL STOCK ITEMS

W.E.F. December 29, 2016

Acti 9

Distribution Boards

Spectacular Design

Blends seamlessly with interiors



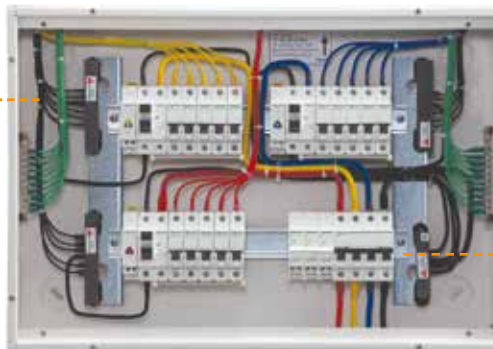
Unique Rounded Corners | Color - RAL 9003 white | Designer Rotary Knob

Maximized Wiring Space

Convenient and Safe wiring



Side mounted N-bar and E-bar



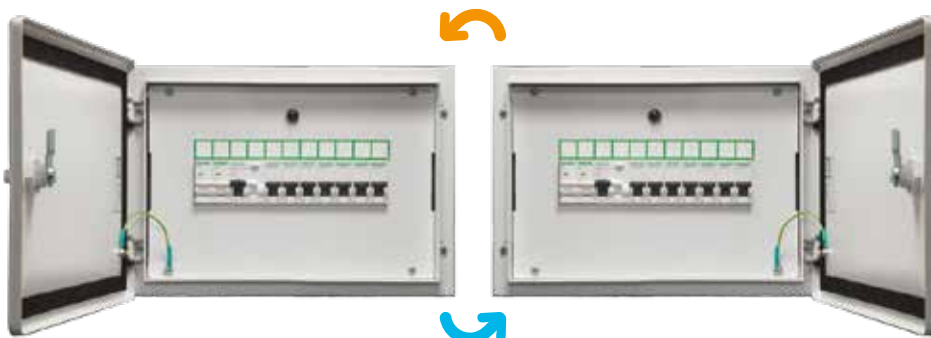
Removed all injurious sharp corners



15% more wiring area | Reduced U-box Collar | Removable Frame, Centre plate & Gland plate

Adaptable

Total Flexibility for ease of installation and usage



Unique 5 holes mounting with positioning hole



Surface and Flush installation | Field fittable key lock provision | Reversible Door

Robust Architecture

Perfect blend of Strength & Weight



High Strength-to-Weight ratio | RoHS and REACH Compliance – ideal solution for GREEN Buildings

Technically Proven

Safety Guaranteed

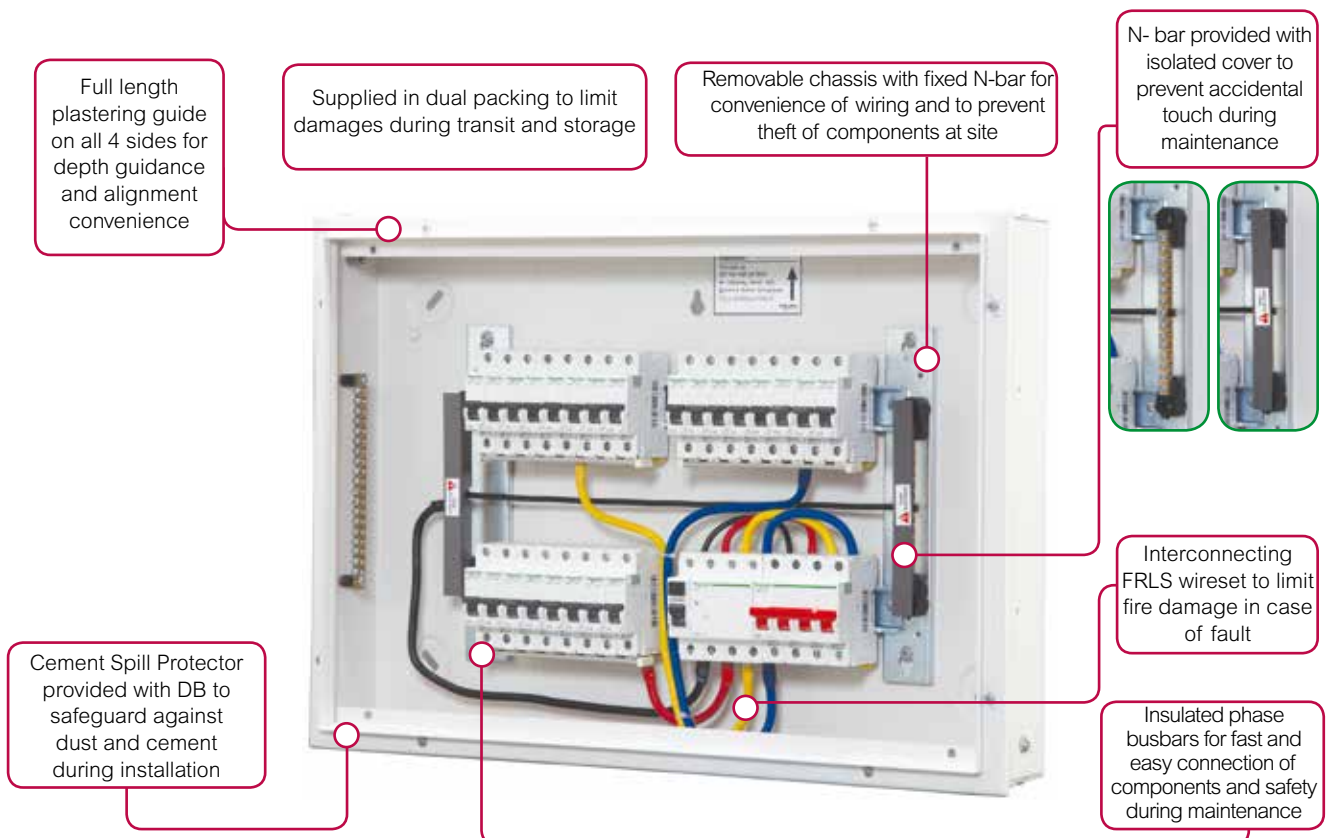
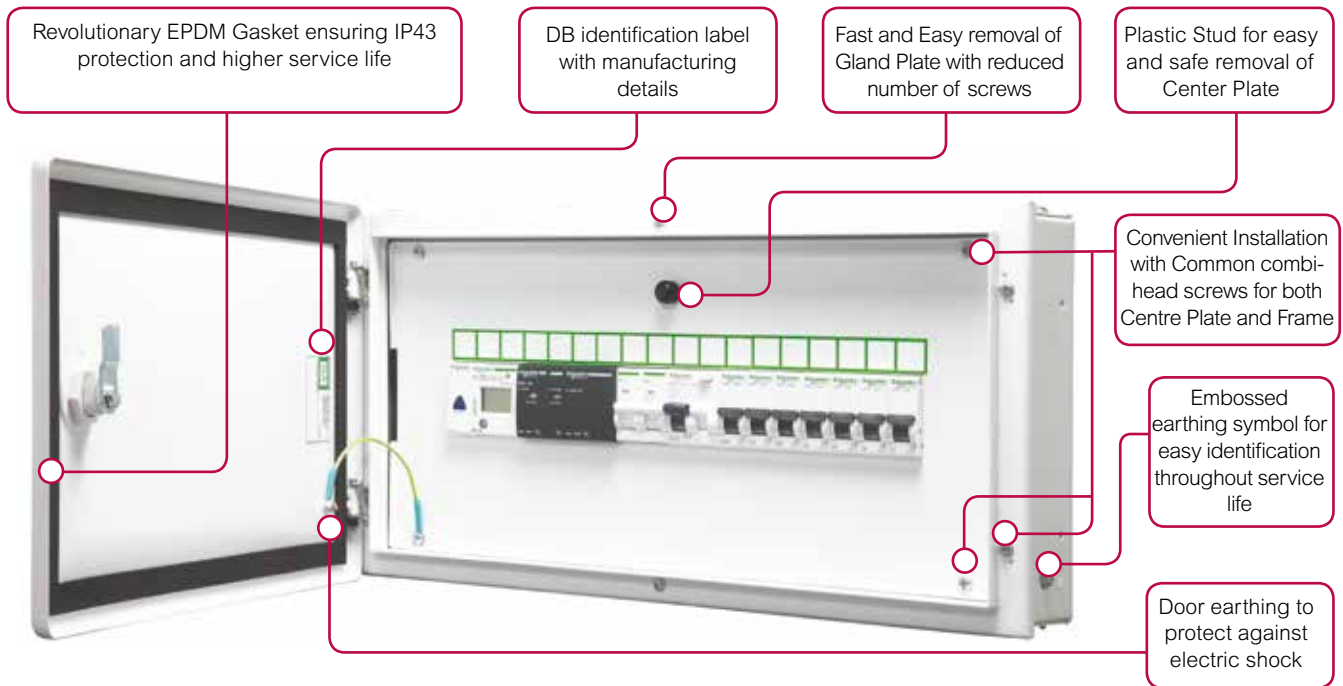


Designed and Manufactured as per IS 8623 - 1&3 | IP and IK test by ERDA & CPRI | Glow wire tested



Acti 9

Distribution Boards



Metal Enclosures



- Metal Enclosure to mount individual Modular Device feeding directly to the load or final distribution board

Description	Total Module Cutout	Single Door (IP30) Reference	Unit MRP [₹]	Double Door Metal (IP43) Reference	Unit MRP [₹]
2 way	1 / 2	A9HMES02 <input checked="" type="checkbox"/>	605	-	-
4 way	3 / 4	A9HMES04 <input checked="" type="checkbox"/>	605	-	-

SPN DBs



- SPN DB for distribution of Single Phase Neutral supply to respective load MCBs
- Incomer - DP RCCB/RCBO/Isolator/MCB
- Outgoing - SP MCBs

Description	Total Module Cutout (Incomer + Outgoing)	Single Door (IP30) Reference	Unit MRP [₹]	Double Door Metal (IP43) Reference	Unit MRP [₹]
6 way	6	A9HSNS06	1195	A9HSND06 <input checked="" type="checkbox"/>	1695
8 way	8	A9HSNS08 <input checked="" type="checkbox"/>	1485	A9HSND08 <input checked="" type="checkbox"/>	1935
12 way	12	A9HSNS12	1755	A9HSND12 <input checked="" type="checkbox"/>	2325
18 way	18	A9HSNS18	2235	A9HSND18 <input checked="" type="checkbox"/>	3030

TPN DBs



- Standard TPN DBs for distribution of Three Phase and Neutral supply
- Incomer - FP RCCB/RCBO/Isolator/MCB
- Outgoing - SP MCBs
- TPN DBs can be converted to PPI DB using 'PPI Kit' provided on next page

Description	Total Module Cutout (Incomer + Outgoing)	Single Door (IP30) Reference	Unit MRP [₹]	Double Door Metal (IP43) Reference	Unit MRP [₹]
4 way eco	4 + 12	-	-	A9HTND04E <input checked="" type="checkbox"/>	3660
4 way	8 + 12	A9HTNS04	3265	A9HTND04 <input checked="" type="checkbox"/>	3790
6 way	8 + 18	A9HTNS06	4030	A9HTND06 <input checked="" type="checkbox"/>	4720
8 way	8 + 24	A9HTNS08	4735	A9HTND08 <input checked="" type="checkbox"/>	5665
12 way	8 + 36	A9HTNS12	7020	A9HTND12 <input checked="" type="checkbox"/>	8565

Flexi Tier DBs



- Flexi DBs give total flexibility to mount any type and size of Modular devices as per load requirement
- Provided with N-Bar and E-Bar
- Flexi Tier DBs can be converted to PPI DB using 'PPI Kit' provided on next page

Description	Total Module Cutout (Incomer + Outgoing)	Single Door (IP30) Reference	Unit MRP [₹]	Double Door Metal (IP43) Reference	Unit MRP [₹]
2 Tier 24 Modules	2 x 12	-	-	A9HFD224	4875
3 Tier 36 Modules	3 x 12	-	-	A9HFD336	5860
4 Tier 40 Modules	4 x 10	-	-	A9HFD440 <input checked="" type="checkbox"/>	6195
4 Tier 56 Modules	4 x 14	-	-	A9HFD456 <input checked="" type="checkbox"/>	6520

Note: For all above Reference MOQ = 1

Please contact Customer Care Center for Stockable and Non stockable status of references.

NORMAL STOCK ITEMS

W.E.F. December 29, 2016

Per Phase Isolation DBs

- PPI DBs to mount DP Residual Current Device (RCD) at an individual phase level to isolate the faulty phase in case of earth leakage and ensure continuity of supply to other healthy phases
- Incomer - Modular (FP MCB/Isolator) using PPI Kit / MCCB100A (TP/FP Compact NSX or EasyPact CVS)
- Sub-Incomer - DP RCCB/RCBO
- Outgoing - SP MCBs

Description	Total Module Cutout (Incomer + Sub-Incomer + Outgoing)	Single Door (IP30) Reference	Unit MRP ₹	Double Door Metal (IP43) Reference	Unit MRP ₹
12 way	100A MCCB + 6 + 36	-	-	A9HPID12M	12595

PPI Kit (to convert TPN and Flexi Tier DBs to PPI DB)



- Set of accessories to convert TPN DBs and 4 tier Flexi DBs to PPI DB
- Kit is provided with additional required quantity of N-Bar, wire set, Busbars (only for Flexi Tier) and Mounting Kit (only for TPN)

Description	Reference	Unit MRP ₹
PPI Kit for 6way TPN DB (2+4w PPI DB)	A9HKIT04 <input checked="" type="checkbox"/>	2435
PPI Kit for 8way TPN DB (2+6w PPI DB)	A9HKIT06 <input checked="" type="checkbox"/>	2850
PPI Kit for 12way TPN DB (2+10w PPI DB)	A9HKIT10 <input checked="" type="checkbox"/>	3170
PPI Kit for 4T40M Flexi DB (2+8w PPI DB)	A9HKIT08 <input checked="" type="checkbox"/>	5170
PPI Kit for 4T56M Flex DB (2+12w PPI DB)	A9HKIT12 <input checked="" type="checkbox"/>	5715

Phase Segregated DBs



- Phase Segregated DBs to provide total safety for installer and maintenance personnel, by compartmentalizing each Phase and separating Incomer, Sub-Incomer and Outgoing
- Offers better continuity of supply in case of faults during maintenance at DB level.
- Incomer - Modular (FP MCB/Isolator) / MCCB 100A (TP/FP during maintenance Compact NSX or EasyPact CVS)
- Sub-Incomer - DP RCCB/RCBO
- Outgoing - SP MCBs

Description	Total Module Cutout (Incomer + Sub-incomer + Outgoing)	Single Door (IP30) Reference	Unit MRP ₹	Double Door Metal (IP43) Reference	Unit MRP ₹
6 way	8 + 12 + 18	-	-	A9HPGD06 <input checked="" type="checkbox"/>	11260
8 way	8 + 12 + 24	-	-	A9HPGD08 <input checked="" type="checkbox"/>	12575
12 way	8 + 12 + 36	-	-	A9HPGD12	16050
12 way with MCCB I/c	100A MCCB + 12 + 36	-	-	A9HPGD12M	21075

VTPN DBs for Modular Incomer



- Ideal solution to distribute power supply to both 3 Phase and 1 Phase loads in the same DB
- Incomer - FP RCCB/RCBO/Isolator/MCB
- Outgoing - SP MCBs / TP MCBs

Description	Total Module Cutout (Incomer + Outgoing)	Single Door (IP30) Reference	Unit MRP ₹	Double Door Metal (IP43) Reference	Unit MRP ₹
4 way	8 + 12	-	-	A9HVTD04 <input checked="" type="checkbox"/>	9525
8 way	8 + 24	-	-	A9HVTD08	12115
12 way	8 + 36	-	-	A9HVTD12	16220

Note: For all above Reference MOQ = 1

Please contact Customer Care Center for Stockable and Non stockable status of references.

NORMAL STOCK ITEMS

W.E.F December 29, 2016

VTPN DBs for MCCB Incomer



- DBs for higher incoming current distribution up to 250A
- Incomer - TP/FP Compact NSX or EasyPact CVS MCCB up to 250A
- Outgoing - SP MCBs / TP MCBs

Description	Total Module Cutout (Incomer + Outgoing)	Single Door (IP30) Reference	Unit MRP ₹	Double Door Metal (IP43) Reference	Unit MRP ₹
4 way	100A MCCB + 12	-	-	A9HVD04L	10430
8 way	100A MCCB + 24	-	-	A9HVD08L	13220
12 way	100A MCCB + 36	-	-	A9HVD12L	17585
4 way	160A MCCB + 12	-	-	A9HVD04M	11535
8 way	160A MCCB + 24	-	-	A9HVD08M	14350
12 way	160A MCCB + 36	-	-	A9HVD12M	19100
8 way	250A MCCB + 24	-	-	A9HVD08H	24685
12 way	250A MCCB + 36	-	-	A9HVD12H	26025

ComReady DBs



- Designed to house Acti 9 communication system
- Supplied with Double DIN rail, E-Bar and Wire channel.
- Accessories to convert Flexi Tier DB into ComReady DB available on request

Description	Total Module Cutout (Incomer + Outgoing)	Single Door (IP30) Reference	Unit MRP ₹	Double Door Metal (IP43) Reference	Unit MRP ₹
1 Tier 24 Modules	24	-	-	A9HCRD124	6515
2 Tier 48 Modules	48	-	-	A9HCRD248	10560

Metal Clad P&S Units



- Plug & Socket Unit with Electra Plug & Socket and provision to mount modular protection devices to feed the end load directly

Description	Total Module Cutout	Single Door (IP30) Reference	Unit MRP ₹	Double Door Metal (IP43) Reference	Unit MRP ₹
10A 1P+N+E P&S	2	A9HMS210	1555	-	-
20A 1P+N+E P&S	2	A9HMS220 <input checked="" type="checkbox"/>	1670	-	-
30A 3P+E P&S	4	A9HMS330	3655	-	-

Industrial P&S Units (provision to mount PratiKa Sockets)



- Plug & Socket Unit with provision to mount PratiKa straight / angled* socket and modular protection devices to feed the end load directly

Description	Total Module Cutout	Single Door (IP30) Reference	Unit MRP ₹	Double Door Metal (IP43) Reference	Unit MRP ₹
16A 3P PK P&S	2	A9HKS316	1440	-	-
32A 3P PK P&S	2	A9HKS332	2385	-	-
32A 5P PK P&S	4	A9HKS532	2830	-	-
63A 5P PK P&S	4	A9HKS563	5715	-	-

*upto 32A socket only

Note: For all above Reference MOQ = 1

Please contact Customer Care Center for Stockable and Non stockable status of references.

NORMAL STOCK ITEMS

W.E.F. December 29, 2016

Locks for Acti 9 DBs



Key Lock

Description	Reference	Unit MRP ₹
Rotary lock	A9HRL801	415
Key Lock	A9HRL802	415

Accessories for Distribution Boards

Description	Reference	Unit MRP ₹
Busbars		
Fork Busbar 1P 12MOD. 63A	R9XFH112	495
Fork Busbar 1P 57MOD. 63A	R9XFH157	1135
Fork Busbar 2P 12MOD. 63A	R9XFH212	580
Fork Busbar 2P 57MOD. 63A	R9XFH257	2170
Fork Busbar 3P 12MOD. 63A	R9XFH312	870
Fork Busbar 3P 57MOD. 63A	R9XFH357	4755
Fork Busbar 4P 12MOD. 63A	R9XFH412	1135
Fork Busbar 4P 57MOD. 63A	R9XFH457	4985
Busbar Accessories		
Set of 10 End Caps 1P	R9XE110	425
Set of 10 End Caps 2P	R9XE210	425
Set of 10 End Caps 3P	R9XE310	515
Set of 10 End Caps 4P	R9XE410	535
Set of 4 Connector Fork 63A	R9XFC04	410
Set of 20 Tooth Caps	R9XT20	590
Blanking Plate	13229B	25

Note: Blanking Plate MOQ = 10, All other MOQ = 1

Customized Distribution Boards to Suit Your Need - Available on Request*

- TV/Telephone DBs
- Pre-Wired DBs
- 8 Segment DBs
- Acrylic Door DBs
- IP54/55 DBs
- DBs with Phase Indication Lamps

*Please contact nearest Schneider Electric Sales Office for Drawings, Reference and Prices

Please contact Customer Care Center for Stockable and Non stockable status of references.

NORMAL STOCK ITEMS

W.E.F. December 29, 2016

NeoBreak Distribution Boards

- Zero Error Installation
- IP 43 for Double Door, IP 30 for Single Door
- Independent intermittent shield

Metal Enclosure

Description	Total Modules I/C + O/G	Reference	Unit MRP ₹
1 way	1	NBKPM1 <input checked="" type="checkbox"/>	370
2 way	2	NBKPM2 <input checked="" type="checkbox"/>	370
3 way	3	NBKPM3 <input checked="" type="checkbox"/>	420
4 way	4	NBKPM4 <input checked="" type="checkbox"/>	420

SPN DBs



Description	Total Modules I/C + O/G	Door Type	Reference	Unit MRP ₹
SPN 4 way	4	Double door	NBKRENSNDD04 <input checked="" type="checkbox"/>	1265
SPN 6 way	6	Double door	NBKRENSNDD06 <input checked="" type="checkbox"/>	1400
SPN 8 way	8	Double door	NBKRENSNDD08 <input checked="" type="checkbox"/>	1515
SPN 12 way	12	Double door	NBKRENSNDD12 <input checked="" type="checkbox"/>	1840
SPN 16 way	16	Double door	NBKRENSNDD16 <input checked="" type="checkbox"/>	2505
SPN 4 way	4	Single door	NBKRENSNSD04 <input checked="" type="checkbox"/>	815
SPN 6 way	6	Single door	NBKRENSNSD06 <input checked="" type="checkbox"/>	1010
SPN 8 way	8	Single door	NBKRENSNSD08 <input checked="" type="checkbox"/>	1090
SPN 12 way	12	Single door	NBKRENSNSD12 <input checked="" type="checkbox"/>	1285
SPN 16 way	16	Single door	NBKRENSNSD16 <input checked="" type="checkbox"/>	1605

TPN DBs



Description	Total Modules I/C + O/G	door Type	Reference	Unit MRP ₹
TPN 4 way	4+12	Double door	NBKRENTHDD04 <input checked="" type="checkbox"/>	3070
TPN 6 way	4+18	Double door	NBKRENTHDD06 <input checked="" type="checkbox"/>	3860
TPN 8 way	4+24	Double door	NBKRENTHDD08 <input checked="" type="checkbox"/>	4825
TPN 12 way	4+36	Double door	NBKRENTHDD12 <input checked="" type="checkbox"/>	7315
TPN 4 way	4+12	Single door	NBKRENTHSD04	2345
TPN 6 way	4+18	Single door	NBKRENTHSD06	2985
TPN 8 way	4+24	Single door	NBKRENTHSD08	3570
TPN 12 way	4+36	Single door	NBKRENTHSD12	5170

Note: For all above Reference MOQ = 1

Please contact Customer Care Center for Stockable and Non stockable status of references.

NORMAL STOCK ITEMS

W.E.F. December 29, 2016

NeoBreak Distribution Boards

VTPN DBs for Modular Incomer



Description	Total Modules I/C + O/G	Door Type	Reference	Unit MRP ₹
VTPN 4 way	8+12	Double door	NBKRENTVDD04	7930
VTPN 8 way	8+24	Double door	NBKRENTVDD08	9935
VTPN 12 way	8+36	Double door	NBKRENTVDD12	13325
VTPN 4 way	8+12	Single door	NBKRENTVSD04	6040
VTPN 8 way	8+24	Single door	NBKRENTVSD08	8295
VTPN 12 way	8+36	Single door	NBKRENTVSD12	11000

VTPN DBs for MCCB Incomer (Suitable for 3P /4P 100A Easyact EZC MCCB)

Description	Total Modules I/C + O/G	Door Type	Reference	Unit MRP ₹
VTPN 4 way	MCCB +12	Double door	NBKRENEZVDD04	9025
VTPN 8 way	MCCB +24	Double door	NBKRENEZVDD08	10935
VTPN 12 way	MCCB +36	Double door	NBKRENEZVDD12	14375

Metal Clad P&S Units



Description	Total Modules I/C + O/G	Reference	Unit MRP ₹
10A SP Plug & Socket	1	NBKRENPSSP10 <input checked="" type="checkbox"/>	975
20A SP plug & Socket	1	NBKRENPSSP20 <input checked="" type="checkbox"/>	1215
20A SPN Plug & Socket	2	NBKRENPSSN20 <input checked="" type="checkbox"/>	1270
20A TP Plug & Socket	3	NBKRENPSTP20 <input checked="" type="checkbox"/>	2410
30A TP Plug & Socket	3	NBKRENPSTP30 <input checked="" type="checkbox"/>	2855

Note: For all above Reference MOQ = 1

Please contact Customer Care Center for Stockable and Non stockable status of references.

NORMAL STOCK ITEMS

W.E.F. December 29, 2016

Kaedra enclosures for PratiKa industrial sockets are part of a complete system of Watertight enclosures from 16A to 125A providing solutions for protection, control and electrical distribution for tertiary and industrial applications



- Degree of protection - IP65
- Impact strength - IK09
- Resistant to chemical and atmospheric agents, UVs etc.
- Self extinguishing class 2 insulating material
- Flame and abnormal heat resistance: 650°C
- Reversible front face for opening of door to left/right
- Combining of enclosures horizontally/vertically while still maintaining IP
- DIN channel can be positioned in 2 depths & 2 heights for cabling purpose

Mini Enclosures for modular devices



Description	Reference	Unit LP
4 module	13441 <input checked="" type="checkbox"/>	2045
6 module	13442	2325
8 module	13443	2740
12 module	13444	4410

Enclosures for modular devices (with terminal blocks)



Description	Reference	Unit LP
1 row 12 module	13431	4865
1 row 18 module	13432	6415
2 row 24 module	13433	7285
2 row 36 module	13434	9220
3 row 36 module	13435	9620
4 row 72 module	13437	18365

Mini Enclosure (suitable to mount modular devices and PratiKa 16A socket)



Description	Reference	Unit LP
4 module 1 vertical opening	13175 <input checked="" type="checkbox"/>	970
4 module 2 horizontal opening	13176	1200
4 module 3 horizontal opening	13177	1510

Note: For all above Reference MOQ = 1

Please contact Customer Care Center for Stockable and Non stockable status of references.

NORMAL STOCK ITEMS

W.E.F. December 29, 2016

Enclosure (suitable to mount modular devices and PratiKa 16A / 32A sockets)



Description	Reference	Unit LP
5 module 2 opening	13178 <input checked="" type="checkbox"/>	2345
8 module 4 horizontal opening	13179	3205
13 module 3 opening	13180	4235
13 module 6 opening	13181	4655
19 module 8 opening	13182	6005

Functional Plaques



Description	Reference	Unit LP
Blank - marked for 1 socket 50x50	13135	295
Blank - marked for 1 socket 65x65 or 75x75	13137	300
Intermediate with 65x85 opening	13136	365
Intermediate with one opening for 65x85 & 90x100	13142	605

Note: For all above Reference MOQ = 1

Wander Plugs



- Conforms to IEC 60309-1 & IEC 60309-2
- PK PratiKa Screw Connect: same orientation of clamp's screws
- External impact strength; IK08
- Glow wire test: 850°C

[In] Rated Current (A)	[Ue] Rated Operational Voltage (V)	Poles Description	Reference	Unit MRP
PratiKa Screw				
IP44				
16	200...250	2P + E	PKE16M423	350
	380...415	3P + E	PKE16M434	445
		3P + N + E	PKE16M435	465
32	200...250	2P + E	PKE32M423	555
	380...415	3P + E	PKE32M434	640
		3P + N + E	PKE32M435	645
IP67				
16	200...250	2P + E	PKE16M723	770
	380...415	3P + E	PKE16M734	870
		3P + N + E	PKE16M735	930
32	200...250	2P + E	PKE32M723	1095
	380...415	3P + E	PKE32M734	1175
		3P + N + E	PKE32M735	1185
PK (63A & 125A available in IP67 only)				
63	200...250	2P + E	81378	3105
	380...415	3P + E	81382	2955
		3P + N + E	81383	2960
125	200...250	2P + E	81390	7920
	380...415	3P + E	81394	9050
		3P + N + E	81395	9050

Small Wall Mounted Sockets



- Conforms to IEC 60309-1 & IEC 60309-2
- External impact strength: IK08
- Glow wire test: 850°C

[In] Rated Current (A)	[Ue] Rated Operational Voltage (V)	Poles Description	Reference	Unit MRP
IP44				
16	200...250	2P + E	PKF16W423	620
	380...415	3P + E	PKF16W434	715
		3P + N + E	PKF16W435	785
32	200...250	2P + E	PKF32W423	805
	380...415	3P + E	PKF32W434	970
		3P + N + E	PKF32W435	1020
IP67				
16	200...250	2P + E	PKF16W723	985
	380...415	3P + E	PKF16W734	1230
		3P + N + E	PKF16W735	1275
32	200...250	2P + E	PKF32W723	1225
	380...415	3P + E	PKF32W734	1790
		3P + N + E	PKF32W735	2380

Note: For all above Reference MOQ = 1

Please contact Customer Care Center for Stockable and Non stockable status of references.

NORMAL STOCK ITEMS

W.E.F. December 29, 2016

Wall Mounted Sockets



- Conforms to IEC 60309 -1 & IEC 60309-2
- Rated operational voltage upto 415V
- Rated operational current upto 125A
- External impact strength: IK08
- Glow wire test: 850°C
- Available only in IP67

[In] Rated Current (A)	[Ue] Rated Operational Voltage (V)	Poles Description	Reference	Unit MRP
63	200...250	2P + E	81178	3820
	380...415	3P + E	81182	3930
		3P + N + E	81183	3990
125	200...250	2P + E	81190	13655
	380...415	3P + E	81194	13780
		3P + N + E	81195	13850

Wander Sockets



- PK PratiKa Screw: same orientation of clamp's screws.
- PK PratiKa : 16A & 32A; IP44 & IP67
- External impact strength; IK08
- Glow wire test: 850 °C
- Conforms to IEC 60309 -1 & IEC 60309-2

[In] Rated Current (A)	[Ue] Rated Operational Voltage (V)	Poles Description	Reference	Unit MRP
PratiKa Screw				
IP44				
16	200...250	2P + E	PKF16M423	485
	380...415	3P + E	PKF16M434	565
		3P + N + E	PKF16M435	615
32	200...250	2P + E	PKF32M423	670
	380...415	3P + E	PKF32M434	815
		3P + N + E	PKF32M435	820
IP67				
16	200...250	2P + E	PKF16M723	900
	380...415	3P + E	PKF16M734	1135
		3P + N + E	PKF16M735	1185
32	200...250	2P + E	PKF32M723	1245
	380...415	3P + E	PKF32M734	1375
		3P + N + E	PKF32M735	1390
PK (63A & 125A available in IP67 only)				
63	200...250	2P + E	81478	3375
	380...415	3P + E	81482	3410
		3P + N + E	81483	3460
125	200...250	2P + E	81490	10645
	380...415	3P + E	81494	10665
		3P + N + E	81495	10875

Also Available on Request:

- Patented FAST connect Plugs & Sockets - innovative cabling system that enables connection without stripping the conductor and with absolutely no screws required
- Extra Low Voltage Plugs & Sockets down to 50V

Please contact nearest Schneider Electric Sales Office or Customer Care for Reference and Prices

Note: For all above Reference MOQ = 1

Please contact Customer Care Center for Stockable and Non stockable status of references.

NORMAL STOCK ITEMS

W.E.F. December 29, 2016

Panel Mounted Sockets - Angled



- PK PratiKa Screw: same orientation of clamp's screws
- External impact strength; IK08
- Glow wire test: 850°C
- Conforms to IEC 60309 -1 & IEC309-2

[In] Rated Current (A)	[Ue] Rated Operational Voltage (V)	Poles Description	Reference	Unit MRP
PratiKa Screw				
IP44				
16	200...250	2P + E	PKF16F423 <input checked="" type="checkbox"/>	375
	380...415	3P + E	PKF16F434	565
		3P + N + E	PKF16F435 <input checked="" type="checkbox"/>	600
32	200...250	2P + E	PKF32F423 <input checked="" type="checkbox"/>	670
	380...415	3P + E	PKF32F434	780
		3P + N + E	PKF32F435 <input checked="" type="checkbox"/>	790
IP67				
16	200...250	2P + E	PKF16F723 <input checked="" type="checkbox"/>	710
	380...415	3P + E	PKF16F734	810
		3P + N + E	PKF16F735	820
32	200...250	2P + E	PKF32F723	925
	380...415	3P + E	PKF32F734	1085
		3P + N + E	PKF32F735 <input checked="" type="checkbox"/>	1105
PK (63A & 125A available in IP67 only)				
63	200...250	2P + E	81278	3050
	380...415	3P + E	81282 <input checked="" type="checkbox"/>	3045
		3P + N + E	81283 <input checked="" type="checkbox"/>	3105
125	200...250	2P + E	81290	10030
	380...415	3P + E	81294	10290
		3P + N + E	81295	10340

Panel Mounted Sockets - Straight



- PK PratiKa Screw: same orientation of clamp's screws
- External impact strength; IK08
- Glow wire test: 850°C
- Conforms to IEC 60309 -1 & IEC309-2

[In] Rated Current (A)	[Ue] Rated Operational Voltage (V)	Poles Description	Reference	Unit MRP
PratiKa Screw				
IP44				
16	200...250	2P + E	PKF16G423	425
	380...415	3P + E	PKF16G434	615
		3P + N + E	PKF16G435	640
32	200...250	2P + E	PKF32G423	680
	380...415	3P + E	PKF32G434	785
		3P + N + E	PKF32G435	845
IP67				
16	200...250	2P + E	PKF16G723 <input checked="" type="checkbox"/>	715
	380...415	3P + E	PKF16G734	810
		3P + N + E	PKF16G735	820
32	200...250	2P + E	PKF32G723	910
	380...415	3P + E	PKF32G734	1025
		3P + N + E	PKF32G735	1065
PK (63A & 125A available in IP67 only)				
63	200...250	2P + E	81678	3050
	380...415	3P + E	81682	3015
		3P + N + E	81683	3015
125	200...250	2P + E	81690	10030
	380...415	3P + E	81694	10290
		3P + N + E	81695	10340

Note: For all above Reference MOQ = 1

Please contact Customer Care Center for Stockable and Non stockable status of references.

NORMAL STOCK ITEMS

W.E.F. December 29, 2016

Sockets with Interlock Switches - for guaranteed safety of operation

- Allows closure of main switch only when the plug is fully inserted in socket - when complete mechanical & electrical connection has occurred
- Plug removal is possible only when the switch is in "off" position

Wall Mounted Sockets with Interlock Switch Unika (w/o protection)

- Switch designed for use in AC 22A class applications
- Conforms to IEC 60309 -1 & IEC 60309-2
- Rated operational voltage upto 415V
- Rated operational current upto 32A
- External impact strength: IK08
- Available in IP44 / IP65 versions
- Glow wire test: 750°C

[In] Rated Current (A)	[Ue] Rated Operational Voltage (V)	Poles Description	Reference	Unit MRP ₹
IP44				
16	200...250	2P + E	83031	5155
		3P + E	83035	7135
	380...415	3P + N + E	83036	7275
32	200...250	2P + E	83042 <input checked="" type="checkbox"/>	6690
		3P + E	83046	7800
	380...415	3P + N + E	83047	7885
IP65				
16	200...250	2P + E	83081	5330
		3P + E	83085	7345
	380...415	3P + N + E	83086	7495
32	200...250	2P + E	83092	6990
		3P + E	83096	8395
	380...415	3P + N + E	83097	8395

Socket with Interlock Switch & DIN Rail Isoblock (4.5 modules)

- Switch designed for use in AC- 22A class applications
- Conforms to IEC 60309 -1 & IEC 60309-2
- Provision to DIN mount 4.5 module device
- External impact strength: IK10
- Available in IP65 version
- Glow wire test: 850°C

[In] Rated Current (A)	[Ue] Rated Operational Voltage (V)	Poles Description	Reference	Unit MRP ₹
16	200...250	2P + E	82754 <input checked="" type="checkbox"/>	6390
		3P + E	82758	7785
	380...415	3P + N + E	82759	8045
32	200...250	2P + E	83791 <input checked="" type="checkbox"/>	7565
		3P + E	83795	8955
	380...415	3P + N + E	83796	9015

Socket with Interlock Switch & DIN Rail Isoblock (6 modules)

- Switch designed for use in AC- 22A class applications
- Conforms to IEC 60309 -1 & IEC 60309-2
- Provision to DIN mount 6 module device
- External impact strength: IK10
- Available in IP65 version
- Glow wire test: 850°C

[In] Rated Current (A)	[Ue] Rated Operational Voltage (V)	Poles Description	Reference	Unit MRP ₹
32	200...250	2P + E	82766	9985
		3P + E	82770	11705
	380...415	3P + N + E	82771	12060
63	380...415	3P + E	82782	13455
		3P + N + E	82783	13495

Note: For all above Reference MOQ = 1

Please contact Customer Care Center for Stockable and Non stockable status of references.

NORMAL STOCK ITEMS

W.E.F. December 29, 2016

ELECTRA Metal Clad Plugs & Sockets are specially designed incorporating the latest safety, quality and user friendly features.

Construction

- The casting is made from non-corroding die-cast aluminum alloy combining exceptional compactness with high strength
- The design/construction eliminates the possibility of mismatch in fitting of plugs in corresponding sockets
- The floating contacts in the sockets are self aligning and facilitates smooth plugging in without undue pressure (These can be easily removed for wiring)
- A provision for pilot pin facilitates mechanical interlocking in case of 63 Amp ratings

Human Safety

Specially designed shroud to avoid accidental finger contact with plug-pins while inserting/removing the plug

Similarly, the contact tubes in sockets are deeply recessed to avoid human contact

- The earthing pins ensure that earth connection is made first and broken last, being longer than conducting pins
- The visible earth terminals facilitate easy checking of earth connection
- The cable grip to the plug is made very strong by providing a compression gland and by protecting it at the point of entry by a strong rubber guard

Applications

Industrial, Commercial & Domestic portable equipments like hand/Power tools, industrial ovens, Welding sets, Mobile generators, Furnaces, Ships, Office Machines, Refrigerators, Coolers, Air-Conditioners, Overhead cranes, Chilling cabinets, Tile polishers and Sewing Machines

Plug



Rating (A)	Poles Description	Voltage (V)	MOQ	Reference	Unit MRP [₹]
10	2P	250	30	AP10 <input checked="" type="checkbox"/>	170
20	2P	250	30	AP20 <input checked="" type="checkbox"/>	180
20	3P	440	30	BP20 <input checked="" type="checkbox"/>	235
30	3P	440	20	BP30 <input checked="" type="checkbox"/>	430
63	3P+N+E	440	4	CP63 <input checked="" type="checkbox"/>	1950

Socket



Rating (A)	Poles Description	Voltage (V)	MOQ	Reference	Unit MRP [₹]
10	2P	250	30	AS10 <input checked="" type="checkbox"/>	180
20	2P	250	30	AS20 <input checked="" type="checkbox"/>	210
20	3P	440	30	BS20 <input checked="" type="checkbox"/>	265
30	3P	440	20	BS30 <input checked="" type="checkbox"/>	455
63	3P+N+E	440	4	CS63 <input checked="" type="checkbox"/>	2065

Please contact Customer Care Center for Stockable and Non stockable status of references.

NORMAL STOCK ITEMS

W.E.F. December 29, 2016

Complete range of switches & sockets suitable for both indoor & outdoor applications like kitchens , swimming pools landscape gardens , exterior walls and other environmentally challenged locations



56SW110LE-GY

Description	IP Rating	Reference	Unit LP [₹]
Surface Switches			
Single Pole Switches Less Enclosure			
1 Pole 250V 10A	IP66	56SW110LE-GY	2135
1 Pole 250V 16A	IP66	56SW116LE-GY	1910
1 Pole 250V 20A	IP66	56SW120LE-GY	3030
1 Pole 250V 32A	IP66	56SW132LE-GY	3580
Double Pole Switches Less Enclosure			
2 Pole 500V 16A	IP66	56SW216LE-GY	3460
2 Pole 500V 20A	IP66	56SW220LE-GY	3460
2 Pole 500V 32A	IP66	56SW232LE-GY	4020
2 Pole 500V 50A	IP66	56SW250LE-GY	4285
2 Pole 500V 63A	IP66	56SW263LE-GY	4710
Triple Pole Switches Less Enclosure			
3 Pole 500V 10A	IP66	56SW310LE-GY	3200
3 Pole 500V 16A	IP66	56SW316LE-GY	3340
3 Pole 500V 20A	IP66	56SW320LE-GY	3510
3 Pole 500V 32A	IP66	56SW332LE-GY	4100
3 Pole 500V 50A	IP66	56SW350LE-GY	4725
3 Pole 500V 63A	IP66	56SW363LE-GY	5490
Four Pole Switches Less Enclosure			
4 Pole 500V 20A	IP66	56SW420LE-GY	4640



66CV563-RG

Description	IP Rating	Reference	Unit LP [₹]
IP66 Industrial Combination Switch Sockets with Enclosure			
500V, 63A with 4 pole switch and 63A 5 Pin Socket	IP66	66CV563-RG	62250
500V, 63A with 4 pole switch and 63A 7 Pin Socket	IP66	66CV763-RG	64000
Plug Top 5 Pin 500V 63A	IP66	66P563-EO	18685
Plug Top 5 Pin 500V 63A	IP66	66P763-EO	20900

Please contact Customer Care Center for Stockable and Non stockable status of references.

NORMAL STOCK ITEMS

W.E.F. December 29, 2016



56SO532LE-GY



56SO320LE-RO

Description	IP Rating	Reference	Unit LP (₹)
Surface Socket Outlets			
3 Pin Sockets Less Enclosure			
3 Pin 250V 16A Indian Standard	IP66	56SO316RP-LE-GY-EX	1920
3 Pin 250V 20A Round Pin	IP66	56SO320LE-GY	2925
3 Pin 250V 32A Round Pin	IP66	56SO332LE-GY	3230
4 Pin Sockets Less Enclosure			
4 Pin 500V 20A Round Pin	IP66	56SO420LE-GY	4330
4 Pin 500V 32A Round Pin	IP66	56SO432LE-GY	5175
4 Pin 500V 40A Round Pin	IP66	56SO440LE-GY	6015
4 Pin 500V 50A Round Pin	IP66	56SO450LE-GY	7970
5 Pin Sockets Less Enclosure			
5 Pin 500V 10A Round Pin	IP66	56SO510LE-GY	4680
5 Pin 500V 20A Round Pin	IP66	56SO520LE-GY	4680
5 Pin 500V 32A Round Pin	IP66	56SO532LE-GY	5555
5 Pin 500V 40A Round Pin	IP66	56SO540LE-GY	8015
5 Pin 500V 50A Round Pin	IP66	56SO550LE-GY	8235



56PA420-EO

Description	IP Rating	Reference	Unit LP (₹)
Plugs			
3 Pin Angle Plugs			
3 Pin 250V 16A Indian Standard	IP66	56PA316RP-GY-EX	1450
3 Pin 250V 20A Round Pin	IP66	56PA320-EO	3030
3 Pin 250V 32A Round Pin	IP66	56PA332-EO	3465
4 Pin Angle Plugs			
4 Pin 500V 20A Round Pin	IP66	56PA420-EO	3695
4 Pin 500V 32A Round Pin	IP66	56PA432-EO	3845
4 Pin 500V 40A Round Pin	IP66	56PA440-EO	4520
4 Pin 500V 50A Round Pin	IP66	56PA450-EO	4565
5 Pin Angle Plugs			
5 Pin 500V 10A Round Pin	IP66	56PA510-EO	3630
5 Pin 500V 20A Round Pin	IP66	56PA520-EO	3630
5 Pin 500V 32A Round Pin	IP66	56PA532-EO	4195
5 Pin 500V 40A Round Pin	IP66	56PA540-EO	4440
5 Pin 500V 50A Round Pin	IP66	56PA550-EO	4545
Combination Switch Socket Outlet			
IP66 Interlocked Switch Socket with Enclosure			
4 Pin 500V 20A Round Pin	IP66	56CVI420-GY	10735
4 Pin 500V 32A Round Pin	IP66	56CVI432-GY	11505
5 Pin 500V 20A Round Pin	IP66	56CVI520-GY	13715
5 Pin 500V 32A Round Pin	IP66	56CVI532-GY	13845
5 Pin 500V 40A Round Pin	IP66	56CVI540-GY	15040

Please contact Customer Care Center for Stockable and Non stockable status of references.

NORMAL STOCK ITEMS

W.E.F. December 29, 2016



56DB2-GY



56DB4-GY

Description	IP Rating	Reference	Unit LP [₹]
Adaptable Enclosures with Gear Tray			
2 Gangpoints, 198X101X140mm	IP66	56DB2-GY	3330
3 Gangpoints, 294X101X140mm	IP66	56DB3-GY	4435
4 Gangpoints, 198X198X140mm	IP66	56DB4-GY	5540
6 Gangpoints, 294X198X140mm	IP66	56DB6-GY	7635
9 Gangpoints, 294X294X180mm	IP66	56DB9-GY	10820
Junction Boxes			
1 Gangpoint, 107X101X90mm	IP66	56JB1-GY	1470
2 Gangpoints, 204X101X90mm	IP66	56JB2-GY	2440
3 Gangpoints, 300X101X90mm	IP66	56JB3-GY	3655
4 Gangpoints, 204X198X90mm	IP66	56JB4-GY	4910

Description	Module Width	Reference	Unit LP [₹]
Switchgear Cover Assembly			
For 1,2,3 Pole MCB with 4 Pole RCD (max. 4M Width)	4	56CB4N-GY	3015

Description	No. of Gangs	Reference	Unit LP [₹]
Flush Surrounds			
Flush Surround	1	56FA1-GY	1070
Flush Surround	2	56FA2-GY	1550
Flush Surround	3	56FA3-GY	2440
Flush Surround	4	56FA4-GY	2440
Mounting Enclosures (Back Boxes)			
101X101X63mm	1	56E1-GY-EX	720
198X101X63mm	2	56E2-GY	1545
294X101X63mm	3	56E3-GY	2525
198X198X63mm	4	56E4-GY	3250
294X198X63mm	6	56E6-GY	5200
391X198X63mm	8	56E8-GY	6825
294X294X63mm	9	56E9-GY	6825
391X391X63mm	16	56E16-GY	6825

Please contact Customer Care Center for Stockable and Non stockable status of references.

NORMAL STOCK ITEMS

W.E.F. December 29, 2016

SWITCH TO STYLE

Perfect solutions for the perfect you

ULTi



NEO



ZENcelo



Opale



LIVIA



LIVIA - Switch to the extra-ordinary



- **Sleek Design** - 2.7mm thin plate with curved body to minimize dust accumulation
- **Stylish Looks** - Soft white texture with glossy finish
- **Robust & Strong** - Innovative honeycomb designed grid plate for extra rigidity
- **Reliable** - High grade heat-resistant polycarbonate and laser marked wiring diagrams
- **Easy to Install** - Snap-In / Snap-Out front loading modules and Bigger terminal holes
- **Green & Eco Friendly** - RoHS compliant range



P1001



P1081



P1002



P1181



P1121



P1120



P1132



P1005



P1025



P1085



P1086



P2005

Description	Reference for White	Unit MRP [₹]	Reference for Pebble Grey	Unit MRP [₹]
Switches				
10AX 1 way switch	P1001	104	P1001_DG	122
10AX 1 way switch with Indicator lamp	P1081	162	P1081_DG	190
10AX 2 way switch	P1002	132	P1002_DG	155
16AX 1 way switch	P1101	148	P1101_DG	173
16AX 1 way switch with Indicator lamp	P1181	202	P1181_DG	237
16AX 1 way switch (2M)	P1121	208	P1121_DG	243
20A DP switch with Indicator lamp	P1120	328	P1120_DG	384
32A DP switch with Indicator lamp	P1132	508	P1132_DG	597
Bell Push				
10A Bell Push switch	P1005	150	P1005_DG	176
10A Bell Push switch (2M)	P1025	198	P1025_DG	232
10A bell push switch with Indicator	P1085	178	P1085_DG	208
10A bell push switch with Indicator (2M)	P1086	218	P1086_DG	256
Sockets				
10A, 2/3pin Socket Outlet with Shutter	P2005	158	P2005_DG	185
10A/16A 3-pin Socket Outlet with Shutter	P2106	234	P2106_DG	275
10A/25A 3 Pin Socket Outlet with Shutter	P2207	322	P2207_DG	378
13A Multi Pin Socket Outlet with Shutter	P2010	278	P2010_DG	334
Fan Regulators & Dimmers				
Step type fan regulator (1M)	P3100	460	P3100_DG	540
Step type fan regulator (2M)	P3200	554	P3200_DG	652
Dimmer 400W (1M)	P3004	797	P3004_DG	957
Dimmer 1000W (2M)	P3012	1040	P3012_DG	1220
Accessories				
RJ 11 Telephone outlet with shutter	P4011	126	P4011_DG	150
RJ 45 Cat 5e Data outlet with shutter	P4045	460	P4045_DG	540
RJ 45 Cat6 Data outlet with shutter	P4046	541	P4046_DG	650
TV socket	P4500	118	P4500_DG	140
Blank off unit (1M)	P0001	34	P0001_DG	40
Cover Plates				
1-2 M Grid & 1 M Cover Frame	P0701	84	P0701_DG	98
1-2 M Grid & 2 M Cover Frame	P0702	86	P0702_DG	100
3 M Grid & 3 M Cover Frame	P0703	106	P0703_DG	123
4 M Grid & 4 M Cover Frame	P0704	126	P0704_DG	148
6 M Grid & 6 M Cover Frame	P0706	166	P0706_DG	194
8 M Grid & 8 M Cover Frame - Horizontal	P0708	218	P0708_DG	255
8 M Grid & 8 M Cover Frame - Square	P0709	244	P0709_DG	286
12 M Grid & 12 M Cover Frame	P0712	296	P0712_DG	347
18 M Grid & 18 M Cover Frame	P0718	414	P0718_DG	487

P2106

P2207



P2010



P3100

Opale - Switches with Satin Finish



- **Patented Smooth Satin Finish** - Scratch Resistant, Easy to Clean & Prevents light reflection off surface
- **Safe to Use** - High grade flame retardant polycarbonate material & Child Proof sockets with unique shutter design
- **Hassle Free Operation** - 'Soft sound' switches with Gold plated Data Socket contacts for better connection
- **Easy to Install** - Snap-In / Snap-Out front loading modules and terminals with indented screws
- **Green & Eco Friendly** - RoHS compliant range



X1001WH



X1286WH



X1186WH



X1005WH



X1085WH



X2005WH



X2106WH



X2010WH



X3200WH



X3104WH



X4010WH



X4500WH



X5001



X5002

Description	Reference for White	Unit MRP [₹]	Reference for Coke Grey	Unit MRP [₹]
Switches				
6A 1 way switch	X1001WH	120	AAKY1001	150
6A 1 way switch with Indicator lamp	X1081WH	178	AAKY1081	212
6A 2 way switch	X1002WH	148	AAKY1002	190
16A 1 way switch	X1101WH	170	AAKY1101	210
16A 1 way switch with Indicator lamp	X1181WH	242	AAKY1181	284
16A 2 way switch	X1102WH	232	AAKY1102	276
6A 1 way switch (2M)	X1021WH	192	AAKY1021	230
16A 1 way switch (2M)	X1121WH	248	AAKY1121	296
6A 1 way switch with Indicator (2M)	X1028WH	242	AAKY1028	290
16A 1 way switch with Indicator (2M)	X1128WH	284	AAKY1128	340
20A DP switch with Indicator (2M)	X1286WH	386	AAKY1286	450
32A DP switch (2M)	AAKX1232	572	-	-
Motor Starter Switch				
25A Motor Starter switch	X1186WH	1060	AAKY1186	1275
Bell Push				
6A Bell Push	X1005WH	164	AAKY1005	196
6A Bell Push (2M)	X1025WH	226	AAKY1025	272
6A Bell Push with Indicator	X1085WH	218	AAKY1085	260
6A Bell Push with Indicator (2M)	X1086WH	242	AAKY1086	290
Sockets				
6A 2/3 Pin Socket Outlet with Shutter	X2005WH	176	AAKY2005	210
6A "Uni Socket" Outlet with Shutter	X2007WH	220	AAKY2007	252
6A/16A 3-Pin Socket Outlet with Shutter	X2106WH	270	AAKY2106	318
13A Multi Pin Socket Outlet with Shutter	X2010WH	288	AAKY2010	346
16A 3-Pin Socket Outlet with Shutter	X2103WH	300	AAKY2103	360
13A BS flat Pin Socket Outlet with Shutter	X2403WH	378	AAKY2403	454
20A 3 Pin Socket Outlet with Shutter	X2206WH	336	AAKY2206	404
25A 3 Pin Socket Outlet with Shutter	X2207WH	370	AAKY2207	442
Fan Regulators & Dimmers				
Step type fan regulator (2M)	X3200WH	622	AAKY3200	746
Dimmer 400W (1M)	X3104WH	564	AAKY3104	676
Dimmer 400W (2M)	X3004WH	874	AAKY3004	1050
Dimmer 1200W	X3012WH	1125	AAKY3012	1350
Accessories				
RJ11 Telephone outlet (no shutter)	X4010WH	148	AAKY4010	180
RJ11 Telephone outlet with shutter	X4011WH	150	AAKY4011	180
Twin RJ11 Telephone outlets (no shutter) (1M)	X4020WH	226	AAKY4020	275
RJ45 Data Outlet with shutter	X4045WH	560	AAKY4045	685
TV Socket	X4500WH	132	AAKY4500	165
RJ45 Cover for Key Stone Type	X4050WH	174	AAKY4050	210
Gripped Cord Outlet	X4550WH	146	AAKY4550	175
Buzzer	X3300WH	604	AAKY3300	668
Blank off unit (1M)	X0001WH	40	AAKY0001	56
Neon Phase Indicator (Red)	X5001	238	-	-
Neon Phase Indicator (Yellow)	X5002	238	-	-
Neon Phase Indicator (Green)	X5003	238	-	-

Opale - Switches with Satin Finish



AAKX6002 + AAKX6004 + X0702



AAKX6006 + X0703

Description	Reference	Unit MRP [₹]
Hotel Series*		
DND Panel	AAKX6001	364
DND Switch	AAKX6002	284
MMR Panel	AAKX6003	344
MMR Switch	AAKX6004	284
Key Tag Switch (Mechanical Type 20 A)	AAKX6005	736
Shaver Socket	AAKX6006	2400

*Available in white colour only



X0733WH



AAKX0744



AAKX0754

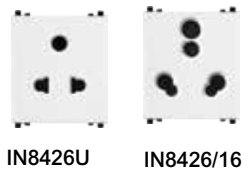
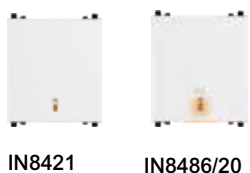
Description	Reference for White	Unit MRP [₹]	Reference for Coke Grey	Unit MRP [₹]	Reference for Matt Silver	Unit MRP [₹]	Reference for Matt Gold	Unit MRP [₹]
Cover Plates								
1-2 M Grid & 1 M Cover Frame	X0701	94	AAKY0801	114	AAKX0741	270	AAKX0751	270
1-2 M Grid & 2 M Cover Frame	X0702	98	AAKY0802	118	AAKX0742	292	AAKX0752	292
3 M Grid & 3 M Cover Frame	X0703	118	AAKY0803	142	AAKX0743	348	AAKX0753	348
3 M Universal Grid & 3 M Cover Frame	X0733WH	156	AAKY0833	186	AAKX0744	348	AAKX0754	348
4 M Grid & 4 M Cover Frame	X0704	142	AAKY0804	170	AAKX0745	414	AAKX0755	414
6 M Grid & 6 M Cover Frame	X0706	192	AAKY0806	230	AAKX0746	512	AAKX0756	512
8 M Grid & 8 M Cover Frame - Horizontal	X0708	254	AAKY0808	300	AAKX0747	672	AAKX0757	672
8 M Grid & 8 M Cover Frame - Square	X0709	298	AAKY0809	356	AAKX0748	672	AAKX0758	672
12 M Grid & 12 M Cover Frame	X0712	350	AAKY0812	420	AAKX0749	916	AAKX0759	916
18 M Grid & 18 M Cover Frame	AAKX0718	458	-	-	-	-	-	-

ZENcelo India - The Revolutionary Full-Flat Switch

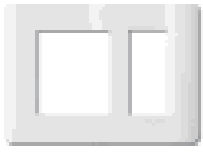


- World's First and only **Full-Flat Mechanical Switch**
- **Patented Iso-Motion Technology** - Ensures switch stays in the same position whether On or Off
- **Robust & Strong** - Made of corrosion-resistant, heat-resistant and impact-resistant polycarbonate
- **Safe to Use** - Electric arc encapsulated switches and Data Sockets with patented integrated shutter
- **Designed to Last** - Switches tested to 80,000 times; Sockets tested to 15,000 cycles.
- **Green & Eco Friendly** - RoHS compliant range

Description	Reference for White	Unit MRP [₹]	Reference for Dark Grey	Unit MRP [₹]
Switches				
6A 1 Way switch	IN8401	170	IN8401(BZ)	214
6A 1 Way switch (2M)	IN8421	254	IN8421(BZ)	306
6A 2 Way switch	IN8402	200	IN8402(BZ)	240
6A 1 Way switch with Neon	IN8481	248	IN8481(BZ)	298
16AX~20A 1 Way switch	IN8401/16	238	IN8401/16(BZ)	290
16AX~20A 1 Way switch (2M)	IN8421/16	334	IN8421/16(BZ)	396
16AX~20A 1 Way switch with Neon	IN8481/16	336	IN8481/16(BZ)	398
16AX~20A 1 Way switch with Neon (2M)	IN8482/16	396	IN8482/16(BZ)	466
16AX~20A 2 Way switch	IN8402/16	332	IN8402/16(BZ)	392
16AX~20A 2 Way switch (2M)	IN8422/16	398	IN8422/16(BZ)	468
16AX~20A 1 Way 2G switch (1M)	IN8444/16	386	IN8444/16(BZ)	466
10AX Intermediate switch	IN8430/IM	514	IN8430/IM(BZ)	608
20A DP Switch with Neon (2M)	IN8486/20	518	IN8486/20(BZ)	612
32A DP Switch with Neon (2M)	IN8486/32	814	IN8486/32(BZ)	968
Motor Starter Switch				
25A Motor Starter switch (2M)	IN8425MS	1300	IN8425MS(BZ)	1380
Bell Push				
6A Bell Push switch	IN8405	220	IN8405(BZ)	266
6A Bell Push switch (2M)	IN8425	322	IN8425(BZ)	380
6A Bell Push switch with Neon	IN8485	286	IN8485(BZ)	338
6A Bell Push switch with Neon (2M)	IN8486	356	IN8486(BZ)	420
Sockets				
2~3 Pin Universal Socket with Shutter	IN8426U	252	IN8426U(BZ)	306
6A/16A 3 Pin Socket with Shutter	IN8426/16	378	IN8426/16(BZ)	464
13A Flat Pin Socket with Shutter	IN84213	518	IN84213(BZ)	612
International Socket with Shutter	IN84213IS	446	IN84213IS(BZ)	558
Universal 2 Pin Socket with Shutter	IN84226U	266	IN84226U(BZ)	312
20A 3 Pin Socket with Shutter	IN84220	482	IN84220(BZ)	568
25A 3 Pin Socket with Shutter	IN84225	516	IN84225(BZ)	618
Fan Regulators & Dimmers				
Fan Control (5 Speeds)	IN84SFR	898	IN84SFR(BZ)	1075
Full Flat 400W Dimmer Module (1 Gang)	IN8404D	770	IN8404D(BZ)	912
Accessories				
RJ11 Telephone Outlet with shutter (1 Gang)	IN8431RJS4	258	IN8431RJS4(BZ)	316
RJ45 Cat6 Data Outlet with shutter	IN8431RJ6	898	IN8431RJ6(BZ)	1105
Data Outlet Wall Plate (for RJ45 key stone jack)	IN8431RJC	246	IN8431RJC(BZ)	290
TV Socket	IN8431TV	188	IN8431TV(BZ)	228
Cord Outlet	IN8445CO	198	IN8445CO(BZ)	236
Foot Lamp with White LED (2M)	IN8490FLW	1700	-	-
Foot Lamp with Yellow LED (2M)	IN8490FLY	1655	-	-
Blank off unit (1M)	IN8430X	56	IN8430X(BZ)	68
Hotel Series				
Do Not Disturb Panel	INH8451	1175	INH8451(BZ)	1390
Make My Room Panel	INH8454	1065	INH8454(BZ)	1260
Do Not Disturb Switch	INH8452	580	INH8452(BZ)	686
Do Not Disturb Switch (2M)	INH8453	592	INH8453(BZ)	698
Make My Room Switch	INH8455	570	INH8455(BZ)	672



ZENcelo India - The Revolutionary Full-Flat Switch



IN8403C



IN8406C



IN8402C(BZ)



IN8404C(SZ)



IN84012C(SA)

Description	Reference for White	Unit MRP [₹]	Reference for Dark Grey	Unit MRP [₹]	Reference for Silver Bronze	Unit MRP [₹]	Reference for Satin Silver	Unit MRP [₹]
Cover Plates								
1M Grid & 1M Cover Frame	IN8401C	138	IN8401C(BZ)	164	IN8401C(SZ)	382	IN8401C(SA)	382
2M Grid & 2M Cover Frame	IN8402C	144	IN8402C(BZ)	172	IN8402C(SZ)	378	IN8402C(SA)	378
3M Grid & 3M Cover Frame	IN8403C	170	IN8403C(BZ)	202	IN8403C(SZ)	466	IN8403C(SA)	466
4M Grid & 4M Cover Frame	IN8404C	184	IN8404C(BZ)	238	IN8404C(SZ)	560	IN8404C(SA)	560
6M Grid & 6M Cover Frame	IN8406C	282	IN8406C(BZ)	336	IN8406C(SZ)	766	IN8406C(SA)	766
8M Grid & 8M Cover Frame - Horizontal	IN8408HC	336	IN8408HC(BZ)	402	IN8408HC(SZ)	1040	IN8408HC(SA)	1040
8M Grid & 8M Cover Frame - Square	IN8408SC	466	IN8408SC(BZ)	584	IN8408SC(SZ)	1325	IN8408SC(SA)	1325
9M Grid & 9M Cover Frame	IN8409C	552	IN8409C(BZ)	688	IN8409C(SZ)	1665	IN8409C(SA)	1665
12M Grid & 12M Cover Frame	IN84012C	730	IN84012C(BZ)	898	IN84012C(SZ)	2325	IN84012C(SA)	2325
18M Grid & 18M Cover Frame	IN84018C	1030	IN84018C(BZ)	1210	IN84018C(SZ)	3080	IN84018C(SA)	3080

ZENcelo BS - The Revolutionary Full-Flat Switch



- **British Standard** - Consistent Plate Size across functions
- World's First and only **Full-Flat Mechanical Switch**
- **Patented Iso-Motion Technology** - Ensures switch stays in the same position whether On or Off
- **Robust & Strong** - Made of corrosion-resistant, heat-resistant and impact-resistant polycarbonate
- **Designed to Last** - Switches tested to 80,000 times; Sockets tested to 15,000 cycles.
- **Green & Eco Friendly** - RoHS compliant range



E8432/1>SZ-OS

E8433/1-OS

E8415_10_WE

E8431D20-OS

E431RJS4-OS

Description	Reference For White	Unit MRP [₹]	Reference For Silver Brozne	Unit MRP [₹]
Switches				
16AX/20A 1 Gang 1 Way switch with Ondicator	E8431/1-OS	294	E8431/1>SZ-OS	366
16AX/20A 2 Gang 1 Way switch with Ondicator	E8432/1-OS	454	E8432/1>SZ-OS	570
16AX/20A 3 Gang 1 Way switch with Ondicator	E8433/1-OS	746	E8433/1>SZ-OS	930
16AX/20A 4 Gang 1 Way switch with Ondicator	E8434/1-OS	1070	E8434/1>SZ-OS	1340
16AX/20A 1 Gang 2 Way switch	E8431/2-OS	314	E8431/2>SZ-OS	392
16AX/20A 2 Gang 2 Way switch	E8432/2-OS	552	E8432/2>SZ-OS	690
16AX/20A 3 Gang 2 Way switch	E8433/2-OS	802	E8433/2>SZ-OS	1005
16AX 1 Gang Intermediate Switch	E8431/I-OS	874	E8431/I>SZ-OS	1095
Double Pole Switches				
20A 1 Gang Double Pole switch with Neon	E8431D20-OS	836	E8431D20>SZ-OS	1095
32A 1 Gang Double Pole switch with Neon	E8431D32-OS	1110	E8431D32>SZ-OS	1455
Bell Push				
10A Full-Flat Bell Switch	E8431BP1-OS	320	E8431BP1>SZ-OS	394
Sockets				
5A 1 Gang 3 Round Pin Switched Socket with Shutter and Ondicator	E8415/5-OS	580	E8415/5>SZ-OS	724
5A 1 Gang 3 Round Pin Switched Socket with Neon and Shutter	E8415/5N-OS	818	E8415/5N>SZ-OS	1025
15A 1 Gang 3 Round Pin Switched Socket with Shutter and Ondicator	E8415/15-OS	686	E8415/15>SZ-OS	858
15A 1 Gang 3 Round Pin Switched Socket with Shutter and Neon	E8415/15N-OS	1005	E8415/15N>SZ-OS	1250
16A 1 Gang International Socket with Shutter	E84426/16IS-OS	730	E84426/16IS>SZ-OS	908
13A 1 Gang Switched Socket with Ondicator	E8415-OS	858	E8415>SZ-OS	1070
13A 1 Gang Switched Socket with Neon	E8415N-OS	724	E8415N>SZ-OS	902
10/16A Switched Socket Outlet -Shuttered	E8415_16_10_WE	764	E8415_16_10_SZ	896
10A 2-3 pin Switched Socket Outlet - Shuttered	E8415_10_WE	608	E8415_10_SZ	758
Fan Regulators & Dimmers				
350VA 50Hz 1 Gang Full-Flat Universal Dimmer with LED	E8431EPD4-OS	1900	E8431EPD4>SZ-OS	2375
Accessories				
1 Gang TV Socket Master	E8431TVM-OS	368	E8431TVM>SZ-OS	458
1 Gang Telephone Socket on Shuttered Wallplate	E8431RJS4-OS	468	E8431RJS4>SZ-OS	586
2 Gang Telephone Socket on Shuttered Wallplate	E8432RJS4-OS	1095	E8432RJS4>SZ-OS	1360
1 Gang Data Outlet Category 5E with Integrated Shutter	E8431RJ/5-OS	730	E8431RJ/5>SZ-OS	908
1 Gang Data Outlet Category 6 with Integrated Shutter	E8431RJ/6-OS	874	E8431RJ/6>SZ-OS	1095
1 Gang Data Outlet Category 5E on Shuttered Wallplate	E8431RJS/5-OS	908	E8431RJS/5>SZ-OS	1140
1 Gang Data Outlet Category 6 on Shuttered Wallplate	E8431RJS/6-OS	1095	E8431RJS/6>SZ-OS	1365
2 Gang Data Outlet Category 5E with Integrated Shutter	E8432RJ/5-OS	1275	E8432RJ/5>SZ-OS	1590
2 Gang Data Outlet Category 6 with Integrated Shutter	E8432RJ/6-OS	1635	E8432RJ/6>SZ-OS	2040
2 Gang Data Outlet Category 5E on Shuttered Wallplate	E8432RJS/5-OS	1275	E8432RJS/5>SZ-OS	1590
2 Gang Data Outlet Category 6 on Shuttered Wallplate	E8432RJS/6-OS	1635	E8432RJS/6>SZ-OS	2040
2 Gang Telephone + Data Outlet Category 5E with Integrated Shutter	E8432TDRJ/5-OS	1095	E8432TDRJ/5>SZ-OS	1365
2 Gang Telephone + Data Outlet Category 5E on Shuttered Wallplate	E8432TDRJS/5-OS	1360	E8432TDRJS/5>SZ-OS	1695
2 Gang Telephone + Data Outlet Category 6 on Shuttered Wallplate	E8432TDRJS/6-OS	1545	E8432TDRJS/6>SZ-OS	1930
TV + Cat 6 shutter outlet	E8432TVRJ6_WE_G1	1360	E8432TVRJ6_SZ_G1	1485
1 Gang Wallplate without Modular Jack	E8431RJ-OS	186	E8431RJ>SZ-OS	230
1 Gang Shuttered Wallplate without Modular Jack	E8431RJS-OS	280	E8431RJS>SZ-OS	344
2 Gang Wallplate without Modular Jack	E8432RJ-OS	314	E8432RJ>SZ-OS	390
2 Gang Shuttered Wallplate without Modular Jack	E8432RJS-OS	330	E8432RJS>SZ-OS	410
25A Connection Unit	E8431TB-OS	730	E8431TB>SZ-OS	908
Blank off unit (1M)	E8430X-OS	194	E8430X>SZ-OS	242

ZENcelo BS - The Revolutionary Full-Flat Switch



E8431USB_WE



E8431USB_SZ



E8431USB_SA

Description	Reference For White	Unit MRP [₹]	Reference For Silver Bronze	Unit MRP [₹]	Reference For Satin Silver	Unit MRP [₹]
-------------	---------------------	--------------	-----------------------------	--------------	----------------------------	--------------

USB Chargers NEW

1 Gang 2.1A USB Charger	E8431USB_WE	3035	E8431USB_SZ	3385	E8431USB_SA	3385
-------------------------	-------------	------	-------------	------	-------------	------



E8431EKT-OS



E8432DMS>SZ-OS



E84T727H-OS



E84T727V>SZ-OS

Description	Reference For White	Unit MRP [₹]	Reference For Silver Bronze	Unit MRP [₹]
-------------	---------------------	--------------	-----------------------------	--------------

Hotel Series

Illuminated "Do Not Disturb" & "Please Clean Up" Symbols	E8432DM-OS	2505	E8432DM>SZ-OS	3130
Illuminated "Do not Disturb" Symbol	E8431D-OS	730	E8431D>SZ-OS	908
1 Gang Full-Flat Switch with Illuminated "Do not Disturb" Symbol	E8431DS-OS	392	E8431DS>SZ-OS	490
2 Gang Full-Flat Switch with Illuminated "Do not Disturb" & "Please Clean Up" Symbols	E8432DMS-OS	2760	E8432DMS>SZ-OS	3450
1 Gang Full-Flat Bell Switch with Illuminated "Do Not Disturb" Symbol	E8431BPD-OS	2100	E8431BPD>SZ-OS	2550
1 Gang Full-Flat Bell Switch with Illuminated "Do Not Disturb" & "Please Clean Up" Symbols	E8431BPDM-OS	2680	E8431BPDM>SZ-OS	3350
Electronic Key Card Time Delay Switch	E8431EKT-OS	5365	E8431EKT>SZ-OS	6710
Universal Shaver Unit, Vertical	E84T727V-OS	3030	E84T727V>SZ-OS	3780
Universal Shaver Unit, Horizontal	E84T727H-OS	3030	E84T727H>SZ-OS	3780

NEO - Face the Future



- **Unique** - Horizontal Switches available for Horizontal Decor
- **Stylish** - Ingenious combination of matt and gloss finish along with a fresh look through use of LED technology
- **Convenient** - Switches with soft, luminiscent "locators" to locate the switch in dark
- **Dual Tone Colours** - Standard colours include Grey and White incorporating Blue and White LED respectively



E3033H1EBGS



E3032H1EWWW



E3032H1FWWW



E3032V1EBGS



E3031V1EWWW



E3032V1FWWW

Description	Horizontal Dolly Reference	Unit MRP [₹]	Vertical Dolly Reference	Unit MRP [₹]
Grey Switches with Blue LED Indicator				
10AX 250V 1 Gang 1 Way Switch	E3031H1EBGS	508	E3031V1EBGS	508
10AX 250V 1 Gang 2 Way Switch	E3031H2EBGS	592	E3031V2EBGS	592
10AX 250V 2 Gang 1 Way Switch	E3032H1EBGS	792	E3032V1EBGS	792
10AX 250V 2 Gang 2 Way Switch	E3032H2EBGS	934	E3032V2EBGS	934
10AX 250V 3 Gang 1 Way Switch	E3033H1EBGS	1160	E3033V1EBGS	1160
10AX 250V 3 Gang 2 Way Switch	E3033H2EBGS	1370	E3033V2EBGS	1370
10AX 250V 4 Gang 1 Way Switch	E3034H1EBGS	1450	-	-
10AX 250V 4 Gang 2 Way Switch	E3034H2EBGS	1715	-	-
White Switches with White LED Indicator				
10AX 250V 1 Gang 1 Way Switch	E3031H1EWWW	492	E3031V1EWWW	492
10AX 250V 1 Gang 2 Way Switch	E3031H2EWWW	568	E3031V2EWWW	568
10AX 250V 2 Gang 1 Way Switch	E3032H1EWWW	788	E3032V1EWWW	788
10AX 250V 2 Gang 2 Way Switch	E3032H2EWWW	906	E3032V2EWWW	916
10AX 250V 3 Gang 1 Way Switch	E3033H1EWWW	1110	E3033V1EWWW	1110
10AX 250V 3 Gang 2 Way Switch	E3033H2EWWW	1290	E3033V2EWWW	1290
10AX 250V 4 Gang 1 Way Switch	E3034H1EWWW	1410	-	-
10AX 250V 4 Gang 2 Way Switch	E3034H2EWWW	1675	-	-
White Switches with White Fluorescent Indicator				
10AX 250V 1 Gang 1 Way Switch	E3031H1FWWW	490	E3031V1FWWW	490
10AX 250V 1 Gang 2 Way Switch	E3031H2FWWW	552	E3031V2FWWW	552
10AX 250V 2 Gang 1 Way Switch	E3032H1FWWW	782	E3032V1FWWW	782
10AX 250V 2 Gang 2 Way Switch	E3032H2FWWW	912	E3032V2FWWW	912
10AX 250V 3 Gang 1 Way Switch	E3033H1FWWW	1105	E3033V1FWWW	1105
10AX 250V 3 Gang 2 Way Switch	E3033H2FWWW	1305	E3033V2FWWW	1305
10AX 250V 4 Gang 1 Way Switch	E3034H1FWWW	1430	-	-
10AX 250V 4 Gang 2 Way Switch	E3034H2FWWW	1690	-	-

NEO - Face the Future



E3031VBP>GS-OS



E3031VD20>EWWW-OS



E3426/10IS>GS-OS



EH3015/6>GS-OS



E3031TV>GS-OS



E3031RJ5E>WW-OS



E3031USB_GS



E3031USB_WW



E3032HDM>GS-OS



E3031EKTH>WW-OS

Description	Reference for Grey	Unit MRP ₹	Reference for White	Unit MRP ₹
Bell Push				
4A 1 Way Horizontal Bell Push Switch	E3031HBP>GS-OS	1055	E3031HBP>WW-OS	1035
4A 1 Way Vertical Bell Push Switch	E3031VBP>GS-OS	1040	E3031VBP>WW-OS	1025
DP Switches				
1 Gang Horizontal 20A DP Switch with Blue LED for Grey Switch and White LED for White Switch	E3031HD20EBGS	882	E3031HD20EWWW	856
1 Gang Vertical 20A DP Switch with Blue LED for Grey Switch and White LED for White Switch	E3031VD20>EBGS-OS	860	E3031VD20>EWWW-OS	832
1 Gang 32A DP Rocker Switch with Blue LED for Grey Switch and White LED for White Switch	E3031DR32EBGS	1290	E3031DR32EWWW	1245
Intermediate Switch				
16AX Intermediate Switch with Blue LED for Grey Switch and White LED for White Switch	E3031VIA>EBGS-OS	1395	E3031VIA>EWWW-OS	1340
Socket				
15A 1 Gang Switch Socket Outlet Grey with Blue LED for Grey Socket and White LED for White Socket	E3015/15-EBGS-EX	1510	E3015/15-EWWW-EX	1470
10A International Socket	E3426/10IS>GS-OS	1180	E3426/10IS>WW-OS	1130
6A 1 Gang Switch Socket Outlet	EH3015/6>GS-OS	872	EH3015/6>WW-OS	838
6/16A 1 Gang Switch Socket Outlet	EH3015/16/6>GS-OS	1220	EH3015/16/6>WW-OS	1195
Fan Regulators & Dimmers				
1 Gang Fan Control	E3031FRGS	1385	E3031FRWW	1255
1 Gang Dimmer with Blue LED for Grey Dimmer and White LED for White Dimmer	E3031HD>EBGS-OS	9000	E3031HD>EWWW-OS	8915
2 Gang Horizontal Dimmer with Blue LED for Grey Dimmer and White LED for White Dimmer	E3032HD>EBGS-OS	15790	E3032HD>EWWW-OS	15350
Accessories				
1 Gang TV Socket Outlet	E3031TV>GS-OS	788	E3031TV>WW-OS	770
2 Gang TV Socket Outlet	E3032VTV>GS-OS	1535	E3032VTV>WW-OS	790
4 Pin 1 Gang Telephone Outlet (CAT 3)	E3031RJ>GS-OS	912	E3031RJ>WW-OS	866
4 Pin 1 Gang 8 Pin Data Outlet (CAT 5E)	E3031RJ5E>GS-OS	2420	E3031RJ5E>WW-OS	2330
4 Pin 2 Gang Telephone Outlet (CAT 3)	E3032RJ>GS-OS	1630	E3032RJ>WW-OS	1535
4 Pin Telephone Outlet (CAT 3) + 8 Pin Data Outlet (CAT 5E)	E3032TD>GS-OS	2980	E3032TD>WW-OS	2885
1G Keystone Plate Shuttered	E3031RJK>GS-OS	522	E3031RJK>WW-OS	504
2G Keystone Plate Shuttered	E3032RJK>GS-OS	546	E3032RJK>WW-OS	538
1 x 2.1A USB Charger NEW	E3031USB_GS	3700	E3031USB_WW	3540
25A Connection Unit	E3031TB>GS-OS	692	E3031TB>WW-OS	664
1 Gang Blank Plate	E3030X>GS-OS	446	E3030X>WW-OS	426
2 Gang Blank Plate	ET3030X>GS-OS	996	ET3030X>WW-OS	962
Hotel Series				
2 Gang "Do Not Disturb" & "Please Clean Up" Combined (Horizontal)	E3032HDM>GS-OS	4605	E3032HDM>WW-OS	4465
1 Gang "Do Not Disturb" & "Please Clean Up" Combined (Vertical)	E3030VDM>GS-OS	4290	E3030VDM>WW-OS	4055
1 Gang Bell Push with "Please Clean Up" Combined (Vertical)	E3031VBP>GS-OS	3520	E3031VBP>WW-OS	3390
1 Gang Bell Push with "Do not Disturb" Combined (Vertical)	E3031VBPD>GS-OS	3520	E3031VBPD>WW-OS	3390
1 Gang Bell Push with "Do Not Disturb" & "Please Clean Up" Combined (Vertical)	E3031VBPDM>GS-OS	3520	E3031VBPDM>WW-OS	3390
Electronic Key Card Switch (Horizontal)	E3031EKTH>GS-OS	10340	E3031EKTH>WW-OS	10065
115/240V Shaver Outlet (Vertical)	ET3727V>GS-OS	5065	ET3727V>WW-OS	4965

W.E.F. December 29, 2016

ULTI Impress - The Ultimate Switch



1 Gang Switch with Crystal Glass Plate



2 Gang Switch with Pearl White Plate



4 Gang Switch with Brushed Silver Plate



Bell Push with Champagne Gold Plate



6-16A Switched Socket with Crystal Glass Plate

- **Super Stylish** - Single piece face plate with maximized space for plate along with soft radiant blue/amber backlight for switches
- **Multiple Finish Options** - Crystal Glass, Champagne Gold, Brushed Silver, Pearl White
- **Technological Marvel** - Mechanical switch with touch and feel of electronic switch with patented impress mechanism
- **Strength & Durability** - Ionized metal grid for back housing plate
- **Automation Alignment** - Lighting Control & Automation available in same finish

Description	Colour	Reference	Unit MRP [₹]
Switches			
1 Gang 250V 16AX 1 Way Switch module with Blue LED	Module	U201SPM/1>B00-OS	4030
1 Gang 250V 16AX 2 Way Switch module with Blue LED	Module	U201SPM/2>B00-OS	4365
Cover Plate for 1 Gang Switch	Brushed Silver	UC21SW/P>XBS-OS	1205
	Champagne Gold	UC21SW/P>XCG-OS	1205
	Crystal Glass	UC21SW/P>XGL-OS	5205
	Pearl White	UC21SW/P>XPW-OS	1205
2 Gang 250V 16AX 1 Way Switch module with Blue LED	Module	U202SPM/1>B00-OS	5375
2 Gang 250V 16AX 2 Way Switch module with Blue LED	Module	U202SPM/2>B00-OS	6040
Cover Plate for 2 Gang Switch	Brushed Silver	UC22SW/P>XBS-OS	1720
	Champagne Gold	UC22SW/P>XCG-OS	1720
	Crystal Glass	UC22SW/P>XGL-OS	5955
	Pearl White	UC22SW/P>XPW-OS	1720
4 Gang 250V 16AX, 1 Way Switch module with Blue LED	Module	U204SPM/1>B00-OS	9230
4 Gang 250V 16AX 2 Way Switch module with Blue LED	Module	U204SPM/2>B00-OS	10405
Cover Plate for 4 Gang Switch	Brushed Silver	UC24SW/P>XBS-OS	2740
	Champagne Gold	UC24SW/P>XCG-OS	2740
	Crystal Glass	UC24SW/P>XGL-OS	7220
	Pearl White	UC24SW/P>XPW-OS	2740
Double Pole Switch			
1 Gang 250V 20A Double Pole Switch module with Blue LED	Module	U201SPM/DP>B00-OS	5375
Cover Plate for 1 Gang DP Switch	Brushed Silver	UC21DP/P>XBS-OS	1670
	Champagne Gold	UC21DP/P>XCG-OS	1670
	Crystal Glass	UC21DP/P>XGL-OS	5040
	Pearl White	UC21DP/P>XPW-OS	1670
Bell Push			
Bell Push Switch Module with Blue LED	Module	US31BPB00	2055
Cover Plate for Bell Press Switch	Brushed Silver	UC31BPXBS	1640
	Champagne Gold	UC31BPXCG	1640
	Crystal Glass	UC31BPXGL	5375
	Pearl White	UC31BPXPW	1640
Sockets			
6-16A Switched Socket	Module	US15/616000	4775
Cover Plate for 6-16A Switched Socket	Brushed Silver	UC15/616XBS	2570
	Champagne Gold	UC15/616XCG	2570
	Crystal Glass	UC15/616XGL	6715
	Pearl White	UC15/616XPW	2570
6A 2/3 Pin Switched Socket	Module	US15/6U000	4040
Cover Plate for 6A 2/3 Pin Switched Socket	Brushed Silver	UC15/6UXBS	2195
	Champagne Gold	UC15/6UXCG	2195
	Crystal Glass	UC15/6UXGL	5705
	Pearl White	UC15/6UXPW	2195
International Socket	Module	US426/16IS000	2440
Cover Plate for International Socket	Brushed Silver	UC426/16ISXBS	1715
	Champagne Gold	UC426/16ISXCG	1715
	Crystal Glass	UC426/16ISXGL	4870
	Pearl White	UC426/16ISXPW	1715

W.E.F. December 29, 2016

ULTI Impress - The Ultimate Switch



Data Socket with Brushed Silver Cover Plate



Twin Data Socket with Crystal Glass Cover Plate



Keycard switch with Brushed Silver Cover Plate



Shaver Socket with Champagne Gold Cover Plate

Description	Colour	Reference	Unit MRP ₹	
Accessories				
TV Socket Module	Module	US31TV000	2055	
	Brushed Silver	UC31TVXBS	1970	
	Champagne Gold	UC31TVXCG	1970	
Cover Plate for TV Socket	Crystal Glass	UC31TVXGL	6545	
	Pearl White	UC31TVXPW	1970	
	Data Socket Module	Module	UD31RJ000	2570
	Cover Plate for Data Socket	Brushed Silver	UDC31RJXBS	1970
Champagne Gold		UDC31RJXCG	1970	
Crystal Glass		UDC31RJXGL	6540	
Pearl White		UDC31RJXPW	1970	
Twin Data Socket Module	Module	UD32TD000	3935	
	Brushed Silver	UDC32TDXBS	1970	
	Champagne Gold	UDC32TDXCG	1970	
Cover Plate for Twin Data Socket	Crystal Glass	UDC32TDXGL	6630	
	Pearl White	UDC32TDXPW	1970	
	Blank Module	Module	US31X000	2355
	Cover Plate for Blank Module	Brushed Silver	UC31XXBS	2145
Champagne Gold		UC31XXCG	2145	
Crystal Glass		UC31XXGL	4375	
Pearl White		UC31XXPW	2145	
USB Chargers NEW				
1 Gang 2.1A USB Charger Module	White	US31USB_WE	3165	
	Grey	US31USB_GY	3165	
	Brushed Silver	UC31USB_XBS	2110	
Cover Plate for 1 Gang 2.1A USB Charger	Champagne Gold	UC31USB_XCG	2110	
	Crystal Glass	UC31USB_XGL	6315	
	Pearl White	UC31USB_XPW	2110	
	Hotel Series			
Keycard Switch with Cover Plate	Brushed Silver	U31EKTHBBS	9400	
	Champagne Gold	U31EKTHACG	9400	
	Crystal Glass	U31EKTHBGL	12390	
	Pearl White	U31EKTHBPW	9400	
Shaver Socket with Cover Plate	Brushed Silver	US727HXBS	7865	
	Champagne Gold	US727HXC	7865	
	Crystal Glass	US727HXGL	11570	
	Pearl White	US727HXPW	7865	

Kavacha - Weather Protected Series



WHT20-GY-EX

- Pleasing looks with **IP56 protection**
- Large press switch
- Co-moulded sealing with no risk of gasket damage
- Chemical resistant & UV stabilised



CSW110-GY-EX



A3031WBP_WE

Description	Reference	Unit MRP [₹]
Kavacha IP56 Surface Mount Switches		
Switches with Looping Terminal		
10A 1 Gang 2 Way Switch	CSW110-GY-EX	1595
20A/16A 1 Gang 2 Way Switch	CSW120-GY-EX	1830
10 A 2 Gang 2 Way Switch	CSW110/2-GY-EX	2170
20A/16A 1 Gang 2 Way Switch	CSW120/2-GY-EX	2435
10A 1 Gang 2 Way Bell Press Return Switch	CSW110BPR-GY-EX	1850
Switches with Looping Terminal with Neon		
10 A 1 Gang 2 Way surface switch with Looping Terminal with Neon	CSW110N-GY-EX	1830
10A 2 Gang 2 Way with Looping Terminal and Neon	CSW110/2N-GY-EX	2305
20A 1 Gang 2 Way with Looping Terminal with Neon	CSW120N-GY-EX	1965
20A/16A 2 Gang 2 Way with Looping Terminal with Neon	CSW120/2N-GY-EX	2575
Double Pole Switches		
20A 1 Gang Double Pole Switch	CSW220-GY-EX	2505
20A 2 Gang Double Pole Switch	CSW220/2-GY-EX	2640
Kavacha Heavy Duty Isolator Switches		
20A Double Pole	WHB220-RG	2765
20A Triple Pole	WHT20-GY-EX	3080
35A Triple Pole	WHT35-GY-EX	3440
55A Triple Pole	WHT55-GY-EX	3660
63A Triple Pole	WHT63-GY-EX	3920
Kavacha IP56 Surface Mount Combined Switched Socket Outlets		
Combination Switch Socket Outlets		
16A Single Pole Switched Socket Outlet	CSC316RP-GY-EX	2640
16A Single Pole Switched Socket Outlet with Neon	CSC316RPN-GY-EX	2845
Kavacha IP56 Surface Mount Socket Outlets		
16A Socket Outlet	CSO316RP-GY-EX	1560
Kavacha Full-Time Weatherproof Cover		
Full-Time Weatherproof Membrane Switch Cover (Transparent) IP55	E223M_TR	930
Full-Time Weatherproof Membrane Switch Cover (White) IP56	E223M_WE	840
Full-Time Weatherproof Single Gang Socket Cover (Transparent) IP55	E223R_TR	654
Full-Time Weatherproof Single Gang Socket Cover (White) IP56	E223R_WE	592
Kavacha Weatherproof Door Bell Switch		
Surface Mounted Door Bell with LED Indicator (Grey) IP44	A3031WBP_GY	976
Surface Mounted Door Bell with LED Indicator (White) IP44	A3031WBP_WE	854

Metal Boxes



- **Weld free design** to minimize corrosion and rusting without compromising on strength
- Mounting clip and earth pin designed for **easier installation** and to **avoid loss during transportation**
- Removable side plates and optimized knock outs and for **easier wiring**
- Completely tested & validated as per **IS 14772**

Description	Reference	Unit MRP ₹
-------------	-----------	---------------

Metal Boxes for Indian Format Ranges (Livia, Opale & ZENcelo India) NEW

0.8 mm thickness

Metal Box 1 & 2 modules	ME0102	76
Metal Box 3 modules	ME0103	98
Metal Box 4 modules	ME0104	112

1 mm thickness

Metal Box 1 & 2 modules	MR1102	85
Metal Box 3 modules	MR1103	110
Metal Box 4 modules	MR1104	129
Metal Box 6 modules	MR1106	176
Metal Box 8 modules - Horizontal	MR1108	232
Metal Box 8 modules - Square	MR1109	232
Metal Box 12 module	MR1112	284
Metal Box 18 modules	MR1118	339

Description	Reference	Unit MRP ₹
-------------	-----------	---------------

Metal Boxes for BS Format Ranges (ZENcelo BS, NEO, ULTI)

1mm thickness

2 GANG GI Metal Boxes	GM1102	198
3 GANG GI Metal Boxes	GM1103	288
4 GANG GI Metal Boxes	GM1104	380

- Special Metal Box with Gang Partition to accommodate BS format ranges
- Single Metal Box can accommodate up to 4 units
- Number of Gangs for Metal Box = Number of units that it can accommodate (Eg. 3 GANG Metal Box can accommodate up to 3 BS format Units)

EzInstall 3 - ULTI ZIGBEE



Glass Plates



Brushed Silver



Champaign Gold



Milky White

- 2 wire design, True Retrofit
- Intelligent dimmer with Auto Load Detection feature
- Capability to dim or switch on/off different load types (in case of non dimmable loads connected to dimmer)
- Very high network scalability with Peer to Peer Mesh technology
- Each unit (switch, dimmer) is a repeater – no need for any additional repeater
- Moods created at a touch of a button
- ZigBee protocol is based on the IEEE802.15.4 standard and works on 2.4GHz radio frequency

Description	Catalogue No.	Unit MRP [₹]
1 Gang 2000VA Zigbee Switch	U201SRY2KWZB	19030
1 Gang Switch Coverplate - Brushed Silver	UC21SWXBS	1480
1 Gang Switch Coverplate - Pearl White	UC21SWXPW	1480
1 Gang Switch Coverplate - Champagne Gold	UC21SWXCG	1480
1 Gang Switch Coverplate - Crystal Glass	UC21SWXGL	6860
2 Gang 2X1000VA Zigbee Switch	U202SRY2KWZB	21940
2 Gang Switch Coverplate - Brushed Silver	UC22SWXBS	2060
2 Gang Switch Coverplate - Pearl White	UC22SWXPW	2060
2 Gang Switch Coverplate - Champagne Gold	UC22SWXCG	2060
2 Gang Switch Coverplate - Crystal Glass	UC22SWXGL	7240
1 Gang 550W Zigbee Dimming Switch	U201DST600ZB	19650
1 Gang Dimmer Coverplate - Brushed Silver	UC21DMXBS	2370
1 Gang Dimmer Coverplate - Pearl White	UC21DMXPW	2370
1 Gang Dimmer Coverplate - Champagne Gold	UC21DMXCG	2370
1 Gang Dimmer Coverplate - Crystal Glass	UC21DMXGL	7160
2 Gang 2X300W Zigbee Dimming Switch	U202DST600ZB	23600
2 Gang Dimmer Coverplate - Brushed Silver	UC22DMXBS	2370
2 Gang Dimmer Coverplate - Pearl White	UC22DMXPW	2370
2 Gang Dimmer Coverplate - Champagne Gold	UC22DMXCG	2370
2 Gang Dimmer Coverplate - Crystal Glass	UC22DMXGL	8990
1 Gang 300VA Zigbee Curtain Control Switch	U201SCN300ZB	23800
1 Gang Curtain Coverplate - Brushed Silver	UC21CNXBS	2130
1 Gang Curtain Coverplate - Pearl White	UC21CNXPW	2130
1 Gang Curtain Coverplate - Champagne Gold	UC21CNXCG	2130

Description	Catalogue No.	Unit MRP [₹]
1 Gang Curtain Coverplate - Crystal Glass	UC21CNXGL	6400
2 Gang 2X300VA Zigbee Curtain Control Switch	U202SCN600ZB	27270
2 Gang Curtain Coverplate - Brushed Silver	UC22CNXBS	2370
2 Gang Curtain Coverplate - Pearl White	UC22CNXPW	2370
2 Gang Curtain Coverplate - Champagne Gold	UC22CNXCG	2370
2 Gang Curtain Coverplate - Crystal Glass	UC22CNXGL	8990
500W ZigBee IND PlugAdaptor Dimmer Wh	U104ND500ZB_WE	18100
Zigbee Handheld Remote Controller	U105RHH001ZB	12210
2Key Zigbee Freelocate Switch, Brushed Silver	U102RWMZB_XBS	10100
2Key Zigbee Freelocate Switch, Champagne Gold	U102RWMZB_XCG	10100
2Key Zigbee Freelocate Switch, Crystal Glass	U102RWMZB_XGL	14400
2Key Zigbee Freelocate Switch, Pearl White	U102RWMZB_XPW	10100
6Key Zigbee Freelocate Switch, Brushed Silver	U106RWMZB_XBS	11330
6Key Zigbee Freelocate Switch, Champagne Gold	U106RWMZB_XCG	11330
6Key Zigbee Freelocate Switch, Crystal Glass	U106RWMZB_XGL	16340
6Key Zigbee Freelocate Switch, Pearl White	U106RWMZB_XPW	11330
Zigbee to RS232 Interface	UB3Z5	13190
Zigbee IR Gateway	U301RSDMZB	19700
Zigbee IP Gateway	U301PGWZB	20180
Zigbee Analog Module	U30010V	10860



Once there were smart homes,
now there are Wiser Homes.



For Details and price information please contact our nearest Sales Office

Sympholux enables you to optimally balance light and energy because Schneider Electric remains the only Lighting Control expert who offers you harmonious orchestration via three platforms

KNX

C-Bus

DALI

No matter what your building type, location, budget or unique application and needs, no one is more perfectly placed to provide you with an optimized solution than Schneider Electric



The standard in interoperability



KNX Benefits

- Developed and supported by one organization of manufacturers and users
- Open protocol compatibility with a vast choice of products/applications
- Full 3rd party integration
- Total multi-functionality of products and media
- Single-system-specific configuration software
- Extensive worldwide training



The expert in ambience lighting



C-BUS Benefits

- Fully topology independent
- Industry standard CAT5e cable
- Highly reliable and robust, cost effective per-node control
- Simple commissioning and installation
- Easy-to-reconfigure distributed intelligent local programming
- High-power and architectural dimming
- Consistent switch and C-Bus product look and feel



Optimizing individual control and centralized management



DALI Benefits

- Single-system control of lighting and emergency lights from multiple manufacturers
- Delivers full dimming of ballasts, groups and lines
- Comprehensive monitoring and energy saving at each device level
- Simple wiring, configuration, maintenance and reconfiguration
- Ethernet backbone linking multiple DALI networks into a single system

ULTI ELV



- ULTI style, state-of-art lighting control and electrical automation scheme for hotel guest room control, offering sophisticated design
- Light touch buttons equipped with LED backlight enable guest to locate switch in a dark environment
- Comparative with Universal Input/ Output module (Room Logic Gateway -RLG) or third party guestroom control system

Description	MOQ	Reference	Unit MRP [₹]
DND/PCU Control Switch	1	US32DMRJ000	On Request
Cover Plate for DND/PCU Switch	50	UC32HDM SXCG	On Request
Cover Plate for DND/PCU Switch	1	UC32HDM SXBS	On Request
Cover Plate for DND/PCU Switch	50	UC32HDM SXGL	On Request
Cover Plate for DND/PCU Switch	1	UC32HDM SXPW	On Request
DND/PCU Indicator w/Bell Press (Blue)	1	US33DMRJ B00	On Request
DND/PCU Indicator w/Bell Press (Amber)	1	US33DMRJA00	On Request
Cover Plate for DND/PCU with bell push switch	1	UC33HBPDM XCG	On Request
Cover Plate for DND/PCU with bell push switch	1	UC33HBPDM XBS	On Request
Cover Plate for DND/PCU with bell push switch	1	UC33HBPDM XGL	On Request
Cover Plate for DND/PCU with bell push switch	50	UC33HBPDM XPW	On Request
Cardkey Switch (Low Voltage)	15	U31EKTHLVB PW	On Request
Cardkey Switch (Low Voltage)	15	U31EKTHLVACG	On Request
Cardkey Switch (Low Voltage)	15	U31EKTHLVBGL	On Request
Cardkey Switch (Low Voltage)	15	U31EKTHLVBBS	On Request
1 Gang ELV Switch (Amber)	30	U201SPM_RJ_A00	On Request
1 Gang ELV Switch (Blue)	1	U201SPM_RJ_B00	On Request
Coverplate for 1 Gang ELV switch	1	UC21SWXCG	On Request
Coverplate for 1 Gang ELV switch	1	UC21SWXBS	On Request

Description	MOQ	Reference	Unit MRP [₹]
Coverplate for 1 Gang ELV switch	1	UC21SWXGL	On Request
Coverplate for 1 Gang ELV switch	1	UC21SWXPW	On Request
2 Gang ELV Switch- AMBER	30	U202SPM_RJ_A00	On Request
2 Gang ELV Switch- BLUE	1	U202SPM_RJ_B00	On Request
Coverplate for 2 Gang ELV switch	1	UC22SWXCG	On Request
Coverplate for 2 Gang ELV switch	1	UC22SWXBS	On Request
Coverplate for 2 Gang ELV switch	1	UC22SWXGL	On Request
Coverplate for 2 Gang ELV switch	1	UC22SWXPW	On Request
4 Gang ELV Switch- AMBER	30	U204SPM_RJ_A00	On Request
4 Gang ELV Switch- BLUE	1	U204SPM_RJ_B00	On Request
Coverplate for 4 Gang ELV switch	50	UC24SW_XCG	On Request
Coverplate for 4 Gang ELV switch	50	UC24SW_XBS	On Request
Coverplate for 4 Gang ELV switch	50	UC24SW_XGL	On Request
Coverplate for 4 Gang ELV switch	50	UC24SW_XPW	On Request

Colours Available (suffix as in coverplates above)

BS	Brushed Silver
PW	Pearl White
CG	Champagne Gold
GL	Crustal Glass

Neo ELV



Description	MOQ	Reference	Unit MRP [₹]
1 gang ELV switch with Amber LED	1	E3031LV>EAGS-OS	On Request
2 gang ELV switch with Amber LED	1	E3032LV>EAGS-OS	On Request
3 gang ELV switch with Amber LED	1	E3033LVEAGS	On Request
1 Gang Curtain Switch without LED	1	E3031CLV>GS-OS	On Request
2 Gang Curtain Switch without LED	1	E3032CLV>EAGS-OS	On Request
1 gang Dimmer Module with Amber LED	1	E3031DLV_EAGS	On Request
2 gang Dimmer Module with Amber LED	1	E3032DLV_EAGS	On Request
Bell Push with DND and MMR Indicator	1	E3031DMBLVEGGS	On Request
Bell Push with DND, MMR and Butler Indicator	60	E3031DMBWLVEGGS	On Request
DND/MMR Control switch	1	E3032DMLV>EAGS-OS	On Request
DND, MMR and Butler Control switch	1	E3033DMBLVEAGS	On Request
Key card switch with Amber LED	60	E3031EKTHLVEAGS	On Request

Zencelo ELV



Description	MOQ	Reference	Unit MRP [₹]
1 Gang Sw W/ LED Indicator	1	E8431LV	On Request
1 Gang Sw W/ LED Indicator, SZ	1	E8431LVSZ	On Request
2 Gang Sw W/ LED Indicator	1	E8432LV	On Request
2 Gang Sw W/ LED Indicator, SZ	1	E8432LV_SZ	On Request
3 Gang Sw W/ LED Indicator	1	E8433LV	On Request
3 Gang Sw W/ LED Indicator, SZ	1	E8433LVSZ	On Request
2 Gang Curtain Sw Open/Close	1	E8432CLV	On Request
2 Gang Curtain Sw Open/Close, SZ	1	E8432CLVSZ	On Request
Elv Keycard Switch	50	E8431EKTlv	On Request
Elv Keycard Switch, SZ	50	E8431EKTlvSZ	On Request
1 Gang Sw W/ DND	1	E8431DSLv	On Request
1 Gang Sw W/ DND, SZ	1	E8431DSLvSZ	On Request
2 Gang Sw W/ DND & PCU	1	E8432DMSLV	On Request
2 Gang Sw W/ DND & PCU, SZ	1	E8432DMSLVSZ	On Request
Bell Press W/ DND & PCU Indicator	1	E8431BDMLV	On Request
Bell Press W/ DND & PCU Indicator, SZ	1	E8431BDMLVSZ	On Request
3 Gang Curtain Sw Open/Half/Close	1	E8433CLV	On Request
3 Gang Curtain Sw Open/Half/Close	1	E8433CLV_SZ	On Request

Colours Available (suffix as above)

SZ Silver Bronze

No suffix after LV White Colour

RLG (UIO), Bedside Panel and Accesories

Description	MOQ	Reference	Unit MRP [₹]
Room Logic Gateway.	1	UB3	On Request
RS485 COMM Board (MCU Card)	1	U20NRUD300000	On Request
UIO Relay Board	1	UAX008	On Request
Firmware download cable	1	UAX-015	On Request
Power Supply For RLG	1	E5400P12/1500BS	On Request
UIO- CBUS Sim Card	1	5000SM/2-HUIO	On Request

Note:

- All Hotel Series items are non stockable and lead time is around 10-14 weeks.
- Customised bedside panels will have a MOQ. Pls speak with the product manager in your region for details.
- For Bedside panel, pl take additional items like MCU card and power supply.
- For room logic gateway, power supply is required separately.

Occupancy Sensors



Description	Reference	Unit MRP [₹]
Argus 300 Electronic outdoor movement detector, max. range 16 m with IP55 protection	MTN564319	13100
Argus 360 Electronic movement detector for outdoor ceiling mounting max. range 16 m, IP55 protection	MTN564419	14480
Argus 110 Electronic outdoor movement detector, angle of detection 110 degrees, max. range 12 mtrs, IP55 protection	MTN565119	6340
Argus 220 Electronic movement detector for outdoor ceiling mounting angle of detection 220 degrees, max. range 12 mtrs, IP55 protection	MTN565219	9510
ARGUS Presence Master with IR, DALI	MTN5510-1519	16500

Accessories

Mounting bracket for Argus 110 and Argus 220 Sensors	MTN565291	750
Extension for Argus 300 Sensor	MTN554399	1260

Ceiling and Wall Mount Sensors

PIR and Ultrasonic Sensors /Surface Mount Sensors



Description	Reference	Unit MRP [₹]
Surface Mount Single-Load 360 degrees PIR	CSS54E_WE	3065
Flush/Surface Mount Single-Load 360 degrees PIR	SAE-UE-MS-CSAWE	3750
Flush Mount Dual load 360 degrees standalone sensor	SAE-UE-MS-CDBWE	7270
Flush/Surface Mount Single - Load 360 degrees, PIR and Ultrasonic Motion sensor	SAE-UE-MS-CU-WE	16480
Flush/Surface Mount Dual Load 360° PIR, 0-10V Analog Dimmable Sensor with remote	SAE-UE-MS-CDD-WE	9425
Remote for PIR and Ultrasonic Motion sensor	SAE-UE-MS-IR10T	1825
Remote for standalone PIR sensor	SAE-UE-MS-1R-WE	2300

Wall Mount Sensors



Description	Reference	Unit MRP [₹]
Neo C-Metro 200 degrees wall mount sensor, grey colour	E3751MS3C_GS	4220
Neo C-Metro 90 degrees wall mount sensor, grey colour	E3751MS3A_GS	
Zencelo 110 degrees wall mount sensor, white colour	E84751MS3B_WE	3900
Zencelo 90 degrees wall mount sensor, white colour	E84751MS3A_WE	

Control and Command Products

Control Systems

Time Switches



- 7D, 24H Programmable switch .Voltage Rating: 230V AC +10%, -15%
- Consumption: 1 channel - max. 4VA; 2 channels - max. 7VA
- Memory: Upto 56 Switching Operations
- Back up of program & time by lithium battery: Operating reserve: 6 Years
- Overall dimensions: 5 modules
- Cable length: 100m
- Minimum time between two switching operations: 1 min

Description	Module Width 18mm/module	Reference	Unit MRP [₹]
IHP - intuitive switch - 1 channel - 7D 24 H	2.5	CCT15720	9500
IHP Plus - intuitive switch - 1 channel - 7D 24 H, pulse programming	2.5	CCT15721	10980
IHP - intuitive switch - 2 channels - 7D 24 H	2.5	CCT15722	11480
IHP+ - intuitive switch - 2 channels - 7D 24 H, pulse programming	2.5	CCT15723	13330

Timers



- Switching capacity 16 A, max
- Delay range from 30 sec to 20 min
- Capacity for lighted pushbutton 150 mA
- Electric distribution busbar compatibility
- Output power capacity CCT15232-2300W
- Output power capacity CCT15223-3600W

Description	Module Width 18mm/module	Reference	Unit MRP [₹]
MINs - electronic timer - 0.5 to 20 min	1	CCT15232	8025
MINs - electronic timer - 0.5 to 20 min with switch Off Warning	1	CCT15233	8080
MINs - electronic timer - 0.5 to 20 min with switch Off Warning and Impulse relay function	1	CCT15234	7770

Light sensitive switch



- Includes wall mounted cell
- Adjustable brightness threshold 2 to 2000 Lux
- 2 LEDs to signal the sensor status and the output status
- Test button: To check the product and load cabling
- Switching capacity: 16Amp
- Screwless Terminals compatible with rigid and flexible wires
- Consumption 6 VA
- Size 45mm

Description	Module Width 18mm/module	Reference	Unit MRP [₹]
IC 2000 - light sensitive switch - 2...2000 lux - with wall-mounted cell	2.5	CCT15368	11425
Wall-mounted cell for IC2000 light sensitive switch		CCT15268	3425
IC 200 - light sensitive switch - 2...200 lux - with wall-mounted cell	2.5	CCT15284	8025
Switchboard cell for IC200 light sensitive switch		15281	2770
IC Astro (Astronomical Time Switches)	2.5	CCT15223	17700

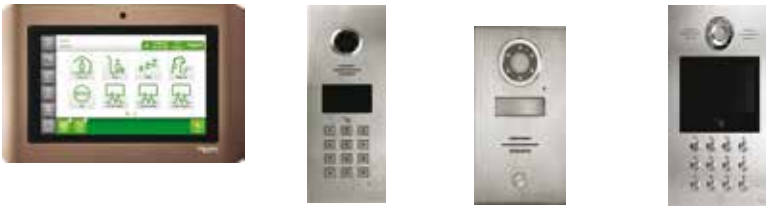
Time Switches (Analog)



Description	Module Width 18mm/module	Reference	Unit MRP [₹]
IH 24H 16 A 15 mts interval 1 channel	1	15336	4140
IH 24H 16 A 30 mts interval 1 channel	1	CCT15365	4650
IH 24H + 7 day 10 A 1 channel- Max 16 On, 16 Off and 7 On + 7 Off cycles	3	153IP 66	6950
IH 7 day 16 A 1 channel- Max 21 On and 21 Off cycles	3	CCT15367	6790
ITM4C6E - multifunctional switch - 4 channels (7 days + dated days)	5	15270	14280
IH 24H 16 A 30 mts 1 channel without reserve	3	CCT16364	3760

Xightor Pro Video Door Entry System

Control Systems



Description	Reference	Unit MRP [₹]
7" VDE Touch screen frame, Matt bronze	VDETC07_MB	On Request
7" VDE Touch screen frame, Matt silver	VDETC07_MS	On Request
7" VDE Touch screen frame, White	VDETC07_WE	On Request
Single phase regulated switch mode power supply - 24W/12V/2A	ABL8MEM12020	On Request
IP Outdoor door camera	VDEDC_SS	On Request
IP Outdoor lobby phone with LCD screen, stainless steel	VDELP1_AL	On Request
IP Outdoor lobby phone without LCD screen, stainless steel	VDELP2_SS	On Request
7" IP Video Door entry touch screen universal base module, including LCD touch screen-electronics, mounting parts	VDETS07D	On Request
Guardphone Software	VDE_AMS	On Request
Server and Management Software	VDE_SERVER	On Request



Description	Reference	Unit LP [₹]
Actassi Copper Cables		
Cat 6a 10G UTP Cable 305m Blue CM	ACTTG4P6AUCM3RBU	On Request
Cat 6a 10G UTP Cable 305m White LSZH	ACTTG4P6AULS3RBU	On Request
Cat 6a 10G FTP Cable 305m BlueCM	ACTTG4P6ASCM3RBU	On Request
Cat 6a 10G FTP Cable 305m Blue LSZH	ACTTG4P6ASLS3RBU	On Request
Cat.6 4pr UTP Cable 305m Blue CM	ACT4P6UCM3RBBU_E	On Request
Cat.6 4pr UTP Cable 305m white LSZH	ACT4P6ULS3RBWE_E	On Request
Cat.6 4pr FTP Cable 305m Blue CM	ACT4P6SCM3RBBU	On Request
Cat.5e 4pr UTP Cable 305m Grey CM	ACT4P5EUCM3RBY	On Request
Actassi Copper Connectivity		
CAT 6A UTP Keystone White Non Shutter	VDIB1775XUWE_E	384
FTP/UTP 24-port Patch Panel Unloaded	ACTPPS24NSU	2627
Cat.6A 10G FTP 24-port Patch Panel Loaded	ACTPP6ATGS24NSS	17073
Cat.6A 10G UTP 24-port Patch Panel Non-Shutter Loaded	ACTPP6ATGU24NSS_E	12029
Cat 6A UTP PP 24 Port 1U Angled UnLoaded	ACTPP6ATGUXXNSA_E	2785
Cat 6A FTP Patchcord 1 mtr Grey	ACTPTG6ASBCM10GY_E	500
Cat 6A FTP Patchcord 1 mtr Blue	ACTPTG6ASBCM10BU_E	500
Cat 6A FTP Patchcord 1 mtr Red	ACTPTG6ASBCM10RD_E	500
Cat 6A FTP Patchcord 2 mtr Grey	ACTPTG6ASBCM20GY_E	599
Cat 6A FTP Patchcord 2 mtr Blue	ACTPTG6ASBCM20BU_E	599
Cat 6A FTP Patchcord 2 mtr Red	ACTPTG6ASBCM20RD_E	599
Cat 6A FTP Patchcord 3 mtr Grey	ACTPTG6ASBCM30GY_E	726
Cat 6A FTP Patchcord 3 mtr Blue	ACTPTG6ASBCM30BU_E	726
Cat 6A FTP Patchcord 3 mtr Red	ACTPTG6ASBCM30RD_E	725
SOCKET RJ45 CAT6 KSTONE BLUE UTP	VDIB17766UBU_E	244
SOCKET RJ45 CAT6 KSTONE RED UTP	VDIB17766URD_E	244
SOCKET RJ45 CAT6 KSTONE YELLOW UTP	VDIB17766UYL_E	244
SOCKET RJ45 CAT6 KSTONE GREEN UTP	VDIB17766UGR_E	244
SOCKET RJ45 CAT6 KSTONE WHITE UTP	VDIB17766UWE_E	244
Cat 6 24 AWG UTP stranded Patch cord 1 Meter - Grey	ACTPC6UBCM10GY_E	217
Cat 6 24 AWG UTP stranded Patch cord 1 Meter - Yellow	ACTPC6UBCM10YL_E	217
Cat 6 24 AWG UTP stranded Patch cord 1 Meter - Green	ACTPC6UBCM10GR_E	217
Cat 6 24 AWG UTP stranded Patch cord 1 Meter - Blue	ACTPC6UBCM10BU_E	217
Cat 6 24 AWG UTP stranded Patch cord 1 Meter - Red	ACTPC6UBCM10RD_E	217
Cat 6 24 AWG UTP stranded Patch cord 2 Meter - Grey	ACTPC6UBCM20GY_E	237
Cat 6 24 AWG UTP stranded Patch cord 2 Meter - Yellow	ACTPC6UBCM20YL_E	237
Cat 6 24 AWG UTP stranded Patch cord 2 Meter - Green	ACTPC6UBCM20GR_E	237
Cat 6 24 AWG UTP stranded Patch cord 2 Meter - Blue	ACTPC6UBCM20BU_E	237
Cat 6 24 AWG UTP stranded Patch cord 2 Meter - Red	ACTPC6UBCM20RD_E	237
Cat 6 24 AWG UTP stranded Patch cord 3 Meter - Grey	ACTPC6UBCM30GY_E	268
Cat 6 24 AWG UTP stranded Patch cord 3 Meter - Yellow	ACTPC6UBCM30YL_E	268
Cat 6 24 AWG UTP stranded Patch cord 3 Meter - Green	ACTPC6UBCM30GR_E	268
Cat 6 24 AWG UTP stranded Patch cord 3 Meter - Blue	ACTPC6UBCM30BU_E	268
Cat 6 24 AWG UTP stranded Patch cord 3 Meter - Red	ACTPC6UBCM30RD_E	268
Cat 6 24 AWG UTP stranded Patch cord 1 Meter LSZH - Grey	ACTPC6UBLS10GY_E	277
Cat 6 24 AWG UTP stranded Patch cord 1 Meter- Yellow LSZH	ACTPC6UBLS10YL_E	227
Cat 6 ,24 AWG UTP stranded Patch cord 1 Meter-Green LSZH	ACTPC6UBLS10GR_E	277
Cat 6 24 AWG UTP stranded Patch cord 1 Meter Blue	ACTPC6UBLS10BU_E	227
Cat 6 24 AWG UTP stranded Patch cord 1 Meter Red	ACTPC6UBLS10RD_E	227
Cat 6 24 AWG UTP stranded Patch cord 2 Meter LSZH Grey	ACTPC6UBLS20GY_E	247

Description	Reference	Unit LP [₹]
Actassi Copper Connectivity		
Cat 6 24 AWG UTP stranded Patch cord 2 Meter Yellow	ACTPC6UBLS20YL_E	247
Cat 6 24 AWG UTP stranded Patch cord 2 Meter Green	ACTPC6UBLS20GR_E	247
Cat 6 24 AWG UTP stranded Patch cord 2 Meter Blue	ACTPC6UBLS20BU_E	247
Cat 6 24 AWG UTP stranded Patch cord 2 Meter Red	ACTPC6UBLS20RD_E	247
Cat 6 24 AWG UTP stranded Patch cord 3 Meter LSZH Grey	ACTPC6UBLS30GY_E	279
Cat 6 24 AWG UTP stranded Patch cord 3 Meter Yellow	ACTPC6UBLS30YL_E	279
Cat 6A 24 AWG UTP stranded Patch cord 3 Meter Green	ACTPC6UBLS30GR_E	279
Cat 6 24 AWG UTP stranded Patch cord 3 Meter Blue	ACTPC6UBLS30BU_E	279
Cat 6 24 AWG UTP stranded Patch cord 3 Meter Red	ACTPC6UBLS30RD_E	279
Cat.5e UTP Keyst Non-Shutter Modular Jack White	ACTRJSM5ENSUWE	169
Cat5e UTP 24-port Non-Shutter Patch Panel Loaded	ACTPP5EU24NSS	4641
Cat.5e Patch Cord UTP 1M CM Grey	ACTPC5EUBCM10GY	200
Cat.5e Patch Cord UTP 2M CM Grey	ACTPC5EUBCM20GY	263
Cat.5e Patch Cord UTP 2M CM Red	ACTPC5EUBCM20RD	263

Life Is On

Schneider
Electric

Schneider Electric India Pvt. Ltd.

Corporate Office: 9th Floor, DLF Building No. 10, Tower C, DLF Cyber City, Phase II, Gurgaon 122002 Haryana
Tel.: ++91 124 3940400 Fax: ++91 124 4222036/ 037

Ahmedabad
Schneider Electric India (P) Ltd.
1506-1507, 15th Floor Shapth-5,
SG Highway, Ahmedabad - 380015
Tel.: 079-66826701

Cochin
Schneider Electric India (P) Ltd.
41 / 406- D1,3rd Floor, Beejay Towers,
Rajaji Road Cochin- 682035
Tel.: 0484-3048401

Ludhiana
Schneider Electric India (P) Ltd.
Office No. - 3, 5th Floor, Novelty Plaza
Bhaiwala Chowk
Ludhiana- 140001
Tel.: 0161- 4656672-75

Secunderabad
D.No. 1-8-271, # 401, Ashoka Bhoopal
Chambers, SP Road,
Secunderabad - 500003
Tel.: 04039404000
Fax.: 040-39131313

Bangalore
Schneider Electric India (P) Ltd.
27, Lavelle Road
Bengaluru-560001
Tel.: 080-67227800

Coimbatore
Schneider Electric India (P) Ltd.
No. -104, Classic Tower, 3rd Floor,
Trichy Road, Coimbatore- 641018
Tel.: 0422-3940400

Mumbai
Schneider Electric India (P) Ltd.
Marwah House, 2nd Floor
Krishanlal Marwah Marg,
Andheri (East), Mumbai - 400072
Tel.: 91-22-30263300

Vadodara
605 & 606, 6th Floor Ocean Building,
Opp.Vadodara Central, Sarabhai Road,
Vadodara-390005
Tel.: 0265-3940400

Bhubaneswar:
Schneider Electric India (P) Ltd.
6th Floor, Block A, JSS Software Technology
park , E 1/1 , Chandaka Industrial
Estate, Info City , Bhubaneswar -751025
Tel.: 0674-6672000

Jaipur
Schneider Electric India (P) Ltd.
Jaipur Business Centre 309, 3rd
Floor, Sangam Tower 190, Church
Road, Jaipur-302001
Tel.: 0141-3912903

Nagpur
Schneider Electric India (P) Ltd.
Fortune Business Centre, 6,
Basant Vihar, W.H.C Road
Shankar Nagar, Nagpur- 440010
Tel.: 0712-2558581

Vishakhapatnam
Schneider Electric India (P) Ltd.
Ratnam's Business Centre,
D.N.10-1-43, 1st Floor
Siripuram Fort,C.B.M.Compound,
Visakhapatnam- 530016
Tel.: 0891 - 2508990

Chandigarh
Schneider Electric India (P) Ltd.
2nd Floor of Tower A
Bestech Business Tower
Sector-66
Mohali- 160059
Tel.: 0172-3324500

Kolkata
Schneider Electric (I)Pvt.Ltd.,
BP-4, Sector-V
Technopolis
3rd floor, Salt Lake City
Kolkata- 700 091
Tel.: 033-333640100-101

Nashik:
Schneider Electric India (P) Ltd.
401, 4th Floor Rishi Raj Towers, Jehan
Circle, Gangapur Road,
Nashik- 422013
Tel: +91-7620498557

Chennai
Schneider Electric India (P) Ltd.
No:29, 2nd floor, Bannari Amman Towers,
B-Block,RK Salai, Mylapore,Chennai -
600 004
Tel.:044- 39404000

Lucknow
Schneider Electric India (P) Ltd.
1st Floor, Asha Bhawan 27 / II -A,
Gokhale Marg, Lucknow- 226001
Tel.: 0522-4006010

Pune
Schneider Electric India (P) Ltd.
1st Floor, R.B. Business Centre
Above Dass Electronics
Sanghvi Nagar, Aundh, Pune- 411007
Tel.: 020-39404000

For more information, visit our website at: www.schneider-electric.co.in

Customer Care Centre

Monday-Saturday, 9 a.m. to 8 p.m.

Toll-free numbers: 1800 425 4272, 1800 103 0011

Email: customercare.in@schneider-electric.com

- All Prices are in Indian Rupees.
- Prices are subject to change without notice.
- Prices charged will be as prevailing on the date of dispatch.
- Maximum Retail Price (MRP) is inclusive of all taxes.

Distributor